

# Japanese Language Program

## Course Guide

Second Semester, Academic Year 2021

Center for International Affairs

Tottori University

Japanese Language Program Course Guide  
Center for International Affairs, Tottori University

CONTENTS

Academic Year 2021 Second Semester Calendar	2
Outline of the Japanese Program	3
Course-by-Course Guide	5
[I] Intensive Japanese Language Course	5
[Z] Common Subjects "Japanese Language" and "Japanese Culture and Society"	7
[P] Japanese Courses by Purpose	9
[N] Comprehensive Japanese Course ("NIKONIKO" Course)	11
Floor Plan of Common Education Building	15

Academic Year 2021 Second Semester Calendar

October

Mon	Tue	Wed	Thu	Fri	Sat	Sun
				1	2	3
4	5	6	7	8	9	10
11	12	13	14	15	16	17
18	19	20	21	22	23	24
25	26	27	28	29	30	31

January

Mon	Tue	Wed	Thu	Fri	Sat	Sun
					1	2
3	4	5	6	7	8	9
10	11	12	13	14	15	16
17	18	19	20	21	22	23
24	25	26	27	28	29	30
31						

November

Mon	Tue	Wed	Thu	Fri	Sat	Sun
1	2	3	4	5	6	7
8	9	10	11	12	13	14
15	16	17	18	19	20	21
22	23	24	25	26	27	28
29	30					

February

Mon	Tue	Wed	Thu	Fri	Sat	Sun
	1	2	3	4	5	6
7	8	9	10	11	12	13
14	15	16	17	18	19	20
21	22	23	24	25	26	27
28						

December

Mon	Tue	Wed	Thu	Fri	Sat	Sun
		1	2	3	4	5
6	7	8	9	10	11	12
13	14	15	16	17	18	19
20	21	22	23	24	25	26
27	28	29	30	31		

March

Mon	Tue	Wed	Thu	Fri	Sat	Sun
	1	2	3	4	5	6
7	8	9	10	11	12	13
14	15	16	17	18	19	20
21	22	23	24	25	26	27
28	29	30	31			

Fri., November 5

Sat., November 13 and Tue., November 30

Mon., November 29

Sat., December 25 to Tue., January 4

Thu., January 6

Wed., January 12

Fri., January 14

Sat., January 29 and Wed., February 9

Fri., February 4

Tue., February 8

Thu., February 10 to Thu., March 31

Wednesday classes

Reserved days for the 3rd quarter

Tuesday classes

Winter Vacation

Tuesday classes

Monday classes

No lectures

Reserved days for the 4th quarter

No lectures

Friday classes

Spring Vacation

## Outline of the Japanese Program at the Center for International Affairs

### 1. Courses and Subjects

The Center for International Affairs of Tottori University offers various Japanese courses and subjects for international students. Please refer to "Course-by-Course Guide," which starts on page 6, to learn about the content of each course.

- [I] Intensive Japanese Language Course --> page 5
- [Z] Common Subjects "Japanese Language" and "Japanese Culture and Society" --> page 7
- [P] Japanese Courses by Purpose --> page 9
- [N] Comprehensive Japanese Language Course ("NIKONIKO" Course) --> page 11

### 2. Courses and subjects that you can take

First, please find out which category you belong to in the student classification. Out of the above courses and subjects, you can take the following courses, depending on your status.

Student Classification	Compulsory Subject	Approved for Credits	Attendance Allowed
① Government-sponsored research students recommended by a Japanese embassy or consulate general (Embassy Recommendation)	[I]		
② Teacher-training students	[I]		
③ Undergraduate students		[Z]	[P]
④ Graduate students			[P], [N]
⑤ Special auditing students (Temporary exchange students)		[Z]	[P], [N]
⑥ Japanese Studies Program students		[Z]	[P], [N]
⑦ Research students			[P], [N]
⑧ Credited special register students, Auditing students (other than ⑤ or ⑥)			[P], [N]

\* However, you may be permitted to take other courses or subjects, depending on your current Japanese proficiency level or other conditions.

\* [Z] Common Subjects "Japanese Language" and "Japanese Culture and Society" and [P] Japanese Courses by Purpose target students who will be presenting research or writing essays in Japanese.

### 3. Class

#### (1) Semesters

One year is divided into two semesters. The first semester starts on April 1 and ends on September 30. The second semester starts on October 1 and ends on March 31 of the next year.

#### (2) Class Hours

The class hours are as shown below.

Period	Class Hours
1st Period	8:45 a.m. – 10:15 a.m.
2nd Period	10:30 a.m. – 12:00 noon
3rd Period	1:00 p.m. – 2:30 p.m.
4th Period	2:45 p.m. – 4:15 p.m.
5th Period	4:30 p.m. – 6:00 p.m.

#### (3) Cancellation of lectures

· In the case that there is a weather warning issued for the northern part of Tottori City (Yonago in the case of students of faculty of medicine) at 7 a.m. and that the public transportation service is suspended, the morning (the first and second periods) lectures are cancelled. They will be later conducted on a reserved day.

· In the case that there is a weather warning issued for the northern part of Tottori City (Yonago in the case of students of faculty of medicine) at 11 a.m. and that the public transportation service is suspended, the afternoon (the third, fourth and fifth periods) lectures are cancelled. They will be later conducted on a reserved day.

· Other lecture cancellations are notified when they occur.

#### (4) Bulletins

Other notifications concerning classes are shown on the bulletin board in the Center for International Affairs Room (1st floor of the Common Education Building) and on the Web page of the Center for International Affairs (<https://www.ciatu.tottori-u.ac.jp/en>). Please check them out every day.

## COURSE-BY-COURSE GUIDE

### [I] Intensive Japanese Language Course

#### (1) Target and Objective

This course is offered to government-sponsored international students recommended by embassies (international research students, teacher-training students), etc. In this course, the Japanese language necessary for everyday life and studies is intensively taught so that the students can perform basic self-expression and communication.

#### (2) Teaching Staff

Basic Japanese: OTACHI, Kurie and OSHIMA, Izumi

KANJI and Sentence-Building: IKEDA, Reiko and OTACHI, Kurie

Comprehensive Japanese Seminar: IKEDA, Reiko

Japanese Culture and Society: CHAN, Cheongjan, KABURAGI, Emi,  
and TAKEDA, Hiroshi

#### (3) Class Schedule and Rooms

	Mon.	Tue.	Wed.	Thu.	Fri.
1 8:45- 10:15	<b>Basic Japanese B3 Collab</b>	<b>Basic Japanese B3 Collab</b>	<b>Basic Japanese B3 Collab</b>	<b>Basic Japanese B3 Collab</b>	<b>KANJI and Sentence-Building B3 Collab</b>
2 10:30- 12:00	<b>Basic Japanese B3 Collab</b>	<b>Basic Japanese B3 Collab</b>	<b>Basic Japanese B3 Collab</b>	<b>Basic Japanese B3 Collab</b>	<b>Japanese Culture and Society B31</b>
3 13:00- 14:30	<b>Comprehensive Japanese Seminar B3 Collab</b>	<b>KANJI and Sentence- Building B3 Collab</b>			

#### (4) Course Content and Teaching Materials

##### BASIC JAPANESE

Using the original textbook *Nihongo Niko Niko* or teaching materials that the teacher makes, you will acquire necessary expressions based on familiar topics so that you will be able to conduct basic communication in Japanese.

## KANJI AND SENTENCE-BUILDING

You will learn the basics of KANJI from the textbook *Minna no Nihongo Shokyu I Kanji (English version)* published by *Three A Network* and increase the number of KANJI that you can understand as we pick KANJI that you see in your everyday lives and your technical studies so that you will be able to read and write longer and longer Japanese texts little by little.

## COMPREHENSIVE JAPANESE SEMINAR

Items you have already learned will be organized, and you will practice using them. Issues that each learner has will also be resolved.

## JAPANESE CULTURE AND SOCIETY

Various Japanese affairs you need to know as an international student living in Japan will be discussed, and students deepen their knowledge and exchange thoughts. You will also perform basic computer operations and input in Japanese.

### (5) Examination and Evaluation

Comprehensive evaluation is done, based on the results of mini quizzes and mid-term examinations, course-completion presentations, rate of attendance, activities in class, etc.

### (6) Main Schedule

(As soon as students arrive)	Opening Ceremony & Course guidance
(As soon as students arrive)	Lessons start
Fri., November 5	Wednesday classes
Sat., November 13	Reserved days for the 3rd quarter
Sat., December 25 to Tue., January 4	Winter Vacation
Thu., January 6	Tuesday classes
Wed., January 12	Monday classes
Fri., January 14	No lectures
Sat., January 29	Reserved days for the 4th quarter
Tue., February 8	Friday classes
Beginning of March	Final presentation
End of March	Closing Ceremony

\*You may be informed of other events at a later date.

[Z] Common Subjects "Japanese Language" and "Japanese Culture and Society"

(1) Target and Objective

This course is offered to regular undergraduate international students, Japanese Studies Program students, etc. All the subjects in this course can be accredited as undergraduate credits. In the Japanese Language classes, students train to improve academic skills so that they can learn smoothly in their faculties. In the Japanese Culture and Society classes, students will come to understand Japanese affairs deeply by learning through lectures done from a wide viewpoint and investigating a theme that they have picked by themselves.

(2) Teaching Staff

Technique for Expression in Japanese II, Japanese for Regular Undergraduate Students II  
: IKEDA, Reiko  
Japanese in Practice II: OTACHI, Kurie  
Japanese Culture II: CHAN, Cheongjan  
Japanese Society II: KABURAGI, Emi, and others

(3) Class Schedule and Rooms

	Mon.	Tue.	Wed.	Thu.	Fri.
1					
2					
3 13:00- 14:30	<b>Japanese Society II C41</b>			<b>Japanese for Regular Undergraduate Students II B32</b>	
4 14:45- 16:15	<b>Japanese in Practice II C41</b>		<b>Technique for Expression in Japanese II C41</b>		
5 16:30- 18:00			<b>Japanese Culture II C41</b>		

(4) Course Content and Teaching Materials

Please refer to *Guide to Taking Common Subjects* or the Web Version of the Syllabus in the Tottori University Academic Affairs System.

<https://www.tottori-u.ac.jp/3890.htm>



### (5) Registration

Regular undergraduate international students are to lay down a study plan so that you can satisfy the graduation requirements of your own faculty and register to take courses at your own faculty.

You can get one credit from one "Japanese Language" subject and two credits from one "Japanese Culture and Society" subject.

Regular undergraduate international students can convert maximum 8 Japanese Culture and Society credits to liberal-arts credits and can also convert maximum 6 Japanese Language credits to foreign language credits. However, they can only convert maximum 12 credits in total. (Please refer to *Guide to Taking Common Subjects*.)

Japanese Studies Program students and special auditing students are to register at their own faculty, too.

As for "Japanese for Regular Undergraduate Students II," it is only offered to regular undergraduate international students only.

### (6) Examination and Evaluation

Please refer to the syllabus.

### (7) Main Schedule

The schedule is the same as that for the common subjects.

Fri., October 1	Class starts
Fri., November 5	Wednesday classes
Sat., November 13 and Tue., November 30	Reserved days for the 3rd quarter
Mon., November 29	Tuesday classes
Sat., December 25 to Tue., January 4	Winter Vacation
Thu., January 6	Tuesday classes
Wed., January 12	Monday classes
Sat., January 29 and Wed., February 9	Reserved days for the 4th quarter
Tue., February 1 to Tue., February 8	Periodic Examinations

[P] Japanese Courses by Purpose

(1) Target, Objective, and Course Content

"N1 Japanese" which is offered to those wishing to take JLPT N1, expands students' abilities in grammar, vocabulary, characters, reading and listening.

"Case-based Learning for Cross-cultural Communication" helps you improve your cross-cultural understanding and communication capabilities in Japanese by using teaching materials based on cases of cross-cultural encounters.

"Report Writing Seminar" is offered to international students who need to write reports in Japanese. They will learn how to write reports and essays in Japanese.

(2) Teaching Staff

N1 Japanese and Case-based Learning for Cross-cultural Communication:

OSHIMA, Izumi

Report Writing Seminar: IKEDA, Reiko

(3) Class Schedule and Rooms

	Mon.	Tue.	Wed.	Thu.	Fri.
1 8:45-10:15				<b>N1 Japanese (Grammar) B2 Collab</b>	
2 10:30-12:00				<b>Case-based Learning for Cross-cultural Communication B32</b>	
3 13:00-14:30			<b>N1 Japanese (Listening and Reading) B2 Collab</b>		
4					
5 16:30-18:00			<b>Report Writing Seminar B32</b>		

(4) Teaching Materials

The teaching staff makes the teaching materials and distributes them.

(5) Registration

Please fill out the following online form with the approval of your supervisor.

<https://www.ciatu.tottori-u.ac.jp/online-application/jp-prog>

\* Authentication Code: nihongo

(6) Examination and Evaluation

In "Case-based Learning for Cross-cultural Communication" and "Report Writing Seminar" evaluation will be done based on presentations and essays. Certificates of course completion will be issued to students whose marks and attendance rates are both 60% or higher.

Evaluation will not be done for "N1 Japanese". Certificates of course completion will not be issued for it, either.

(7) Main Schedule

Wed., October 13	Class starts
Fri., November 5	Wednesday classes
Sat., November 13 and Tue., November 30	Reserved days for the 3rd quarter
Sat., December 25 to Tue., January 4	Winter Vacation
Thu., January 6	Tuesday classes
Wed., January 12	Monday classes
Sat., January 29 and Wed., February 9	Reserved days for the 4th quarter
Thu., February 3	Course ends.

[N] Comprehensive Japanese Language Course ("NIKONIKO" Course)

(1) Target and Objective

This course is for graduate students, research students, etc. It will improve Japanese abilities needed for everyday life and self-expressions or basic Japanese abilities in a way that fits each student's current Japanese proficiency level.

Tottori Campus	Yonago Campus	
Japanese A	—	Students who learn Japanese for the first time.
Japanese B	Elementary	Students who can speak simple Japanese. (Students who have taken 50 to 100 hours of Japanese lessons.)
Japanese C		Students who can perform basic communication in Japanese in everyday lives. (Students who have taken 200 to 300 hours of Japanese lessons.)
Japanese D	Intermediate	Students who can make themselves roughly understood in Japanese. (Students who have taken 300 hours of Japanese lessons or more.)
KANJI Workshop		All the students who want to study kanji.
Japanese culture and society		All the students who want to learn about Japanese culture and society. <b>* Classes will be conducted in English.</b>

(2) Teaching Staff

Tottori Campus

Japanese A: ITO, Kuniko

Japanese B: ITO, Kuniko and MURATA, Kazuko

Japanese C: MURATA, Kazuko and KAWAGUCHI, Feifei

Japanese D: MURATA, Kazuko and ITO Kuniko

KANJI Workshop: OTACHI, Kurie

Japanese Culture and Society: CHAN, Cheongjan, KABURAGI, Emi,  
and TAKEDA, Hiroshi

Yonago Campus

Elementary and Intermediate : TSUCHIE, Kanako

(3) Class Schedule and Rooms

Tottori Campus

	Mon.	Tue.	Wed.	Thu.	Fri.
1 8:45- 10:15	<b>Japanese B B32</b>	<b>Japanese B B32</b>	<b>Japanese B B32</b>		
	<b>Japanese D B2 Collab</b>	<b>Japanese D B2 Collab</b>	<b>Japanese D B2 Collab</b>		
2 10:30- 12:00					<b>Japanese Culture and Society B31</b>
3					
4 14:45- 16:15		<b>KANJI Workshop Language Shower Room</b>			
5 16:30- 18:00	<b>Japanese A B21</b>	<b>Japanese A B21</b>	<b>Japanese A B21</b>	<b>Japanese A B21</b>	
		<b>Japanese C B2 Collab</b>	<b>Japanese C B2 Collab</b>	<b>Japanese C B2 Collab</b>	

Yonago Campus

	Wed.
2 10:30-12:00	<b>Tutorial Tutorial Room</b>
3 13:00-14:30	<b>Intermediate Tutorial Room</b>
4 14:45-16:15	<b>Elementary Tutorial Room</b>

(4) Course Content and Teaching Materials

Tottori Campus

JAPANESE A

This course will develop your basic communication skills in Japanese as it helps you acquire necessary expressions, based on topics which the original textbook *Nihongo Niko Niko*.

## JAPANESE B

Based on the latter half of the textbook *Dekiru Nihongo Shokyu* published by Alc, students will learn basic sentence patterns and expressions so that they can perform better communication. Students will also learn to read and write relatively short articles, using the first half of *Tanoshii Yomimono 55* published by Alc.

## JAPANESE C

Based on the textbook *Dekiru Nihongo Sho-chukyu* published by Alc, students will learn new expressions by connecting them with the expressions they have already acquired so that they will be able to understand and express situations and feelings more accurately. Students will also learn to read and write relatively long articles, using the latter half of *Tanoshii Yomimono 55* published by Alc.

## JAPANESE D

By using the textbook *Dekiru Nihongo Chukyu* published by Alc, students will improve their thinking power and communicative competence for attaining the goal of their action, based on the theme of each unit. Also, composition time is set up once a week, and students practice so that they can summarize their opinions about a designated topic appropriately or write a text that fits the purpose or situation.

## KANJI WORKSHOP

You will choose a textbook that fits you, and you will study KANJI at your own pace with a Japanese student partner. (If you have your own KANJI textbook, please bring it.)

## JAPANESE CULTURE AND SOCIETY

Various Japanese affairs you need to know as an international student living in Japan will be discussed, and students deepen their knowledge and exchange thoughts. You will also perform basic computer operations and input in Japanese.

## Yonago Campus

### ELEMENTARY

By referring to the textbook *NIHONGO 45 jikan* published by *Senmon kyoiku* publishing, students will improve their basic communication skills in Japanese, acquiring necessary expressions.

### INTERMEDIATE

Referring to the textbook *Tsunagu Nihongo Shokyu 2* published by ASK, students will learn Japanese so that they can form smooth human relationships through Japanese, focusing on conversations needed in laboratories.

#### (5) Registration

Please fill out the following online form with the approval of your supervisor.

<https://www.ciatu.tottori-u.ac.jp/online-application/jp-prog>

\* Authentication Code: nihongo

#### (6) Examination and Evaluation

Evaluation is based on the examination and attendance rates.

Certificates of course completion will be issued to students whose test scores and attendance rates are both 60% or higher.

#### (7) Main Schedule

Mon., October 18	Class starts.
Fri., November 5	Wednesday classes
Sat., November 13 and Tue., November 30	Reserved days for the 3rd quarter
Mon., November 29	Tuesday classes
Sat., December 25 to Tue., January 4	Winter Vacation
Thu., January 6	Tuesday classes
Wed., January 12	Monday classes
Sat., January 29 and Wed., February 9	Reserved days for the 4th quarter
Tue., February 1 to Mon., February 7	Term-end examinations
Wed., March 2, 9, 16	Spring class (Yonago Campus)

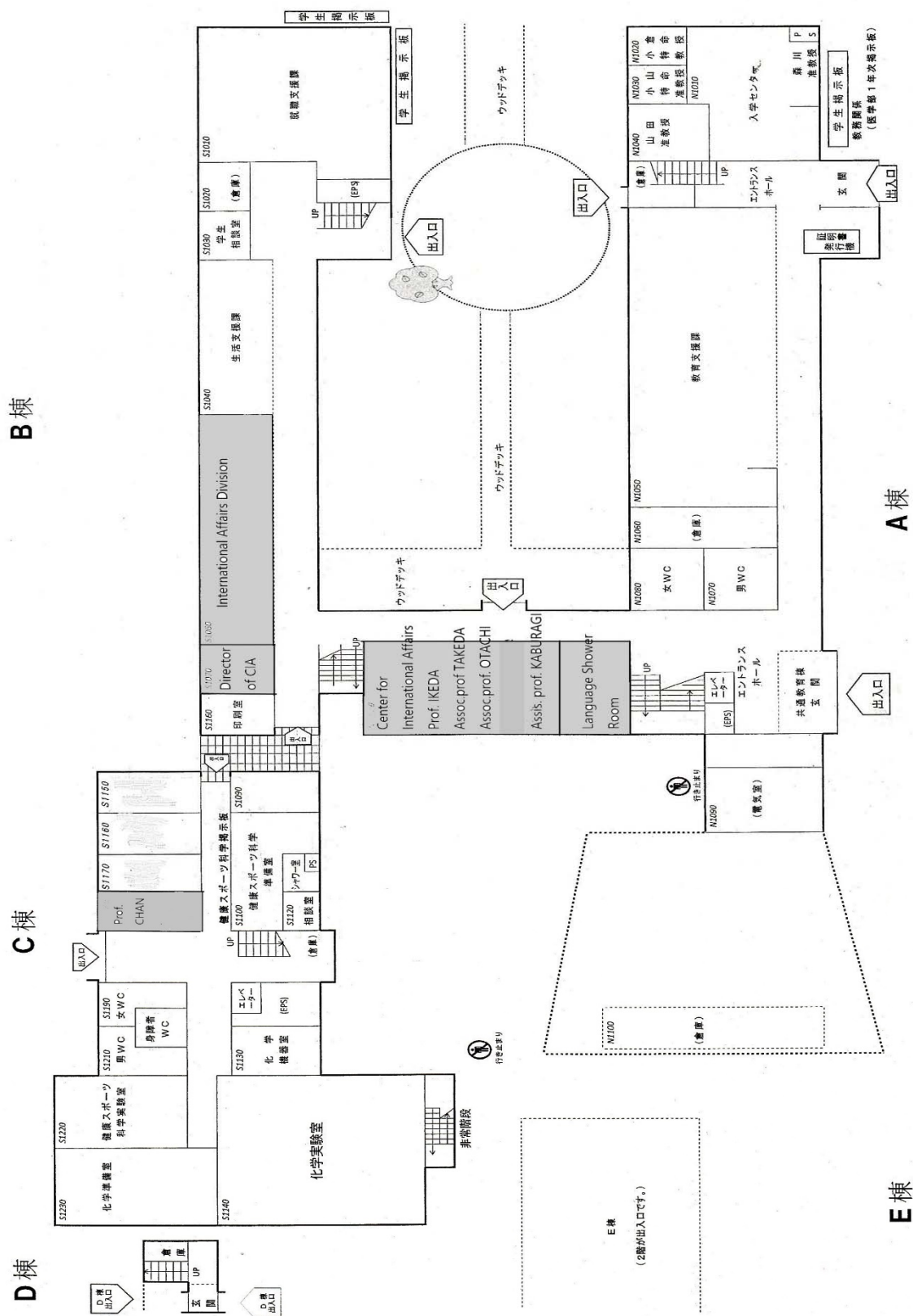
#### (8) Others

· Textbooks will be lent to students in "Japanese B," "Japanese C," "Japanese D," and "KANJI Workshop." Since they belong to the Center for International Affairs, please do not write anything directly in the textbooks. If you wish to purchase any of these textbooks, please contact the Center.

· You can transfer to another class within four weeks from the start of the course and only in the case that the teacher in charge thinks it appropriate for you to do so.

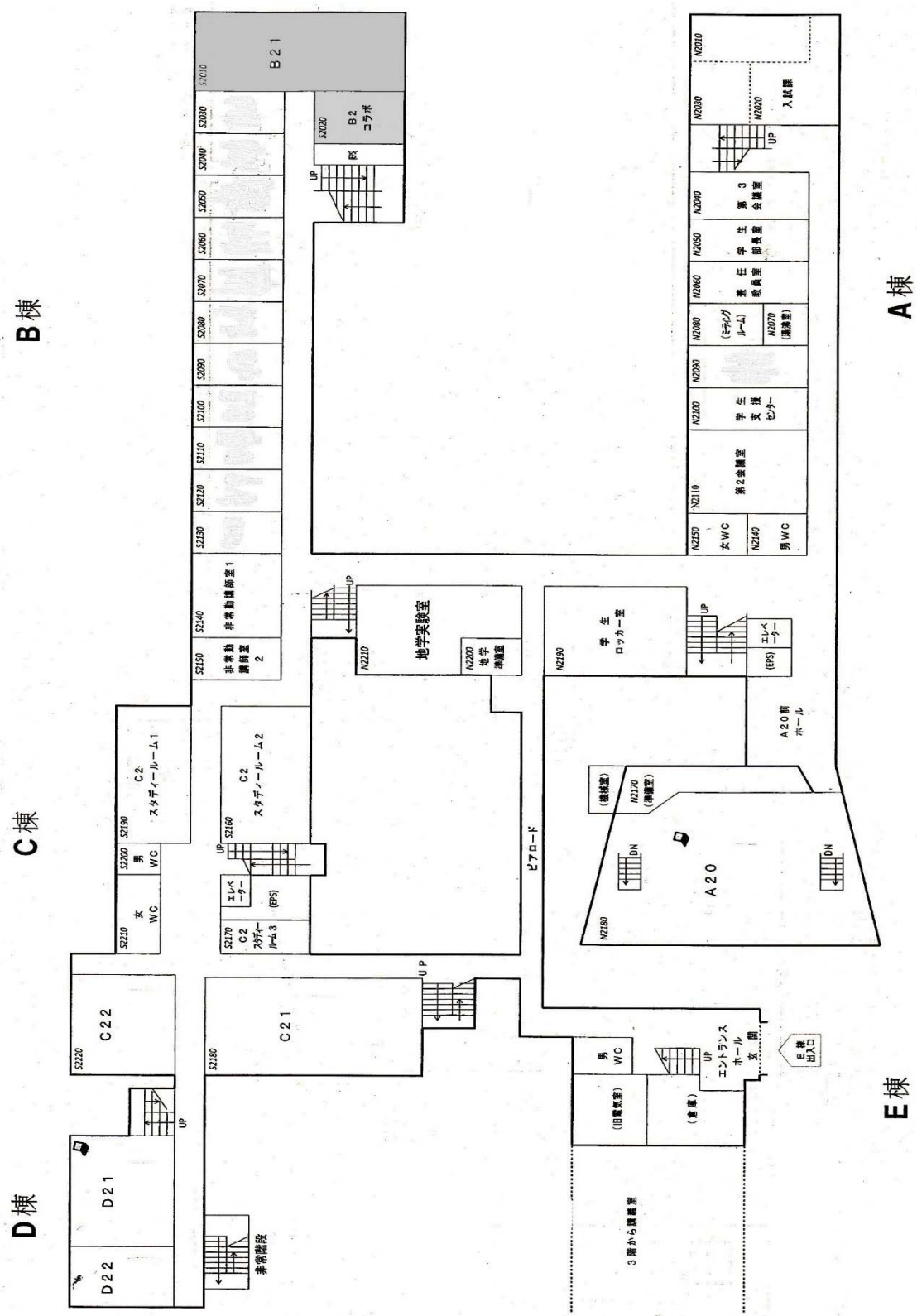
· In the case that your arrival to Japan is delayed, you can register for these courses if you have already learned Japanese, but if you are a beginner of Japanese, you must wait until the next semester to participate in these courses.

# Floor Plan of Common Education Building (1st Floor)

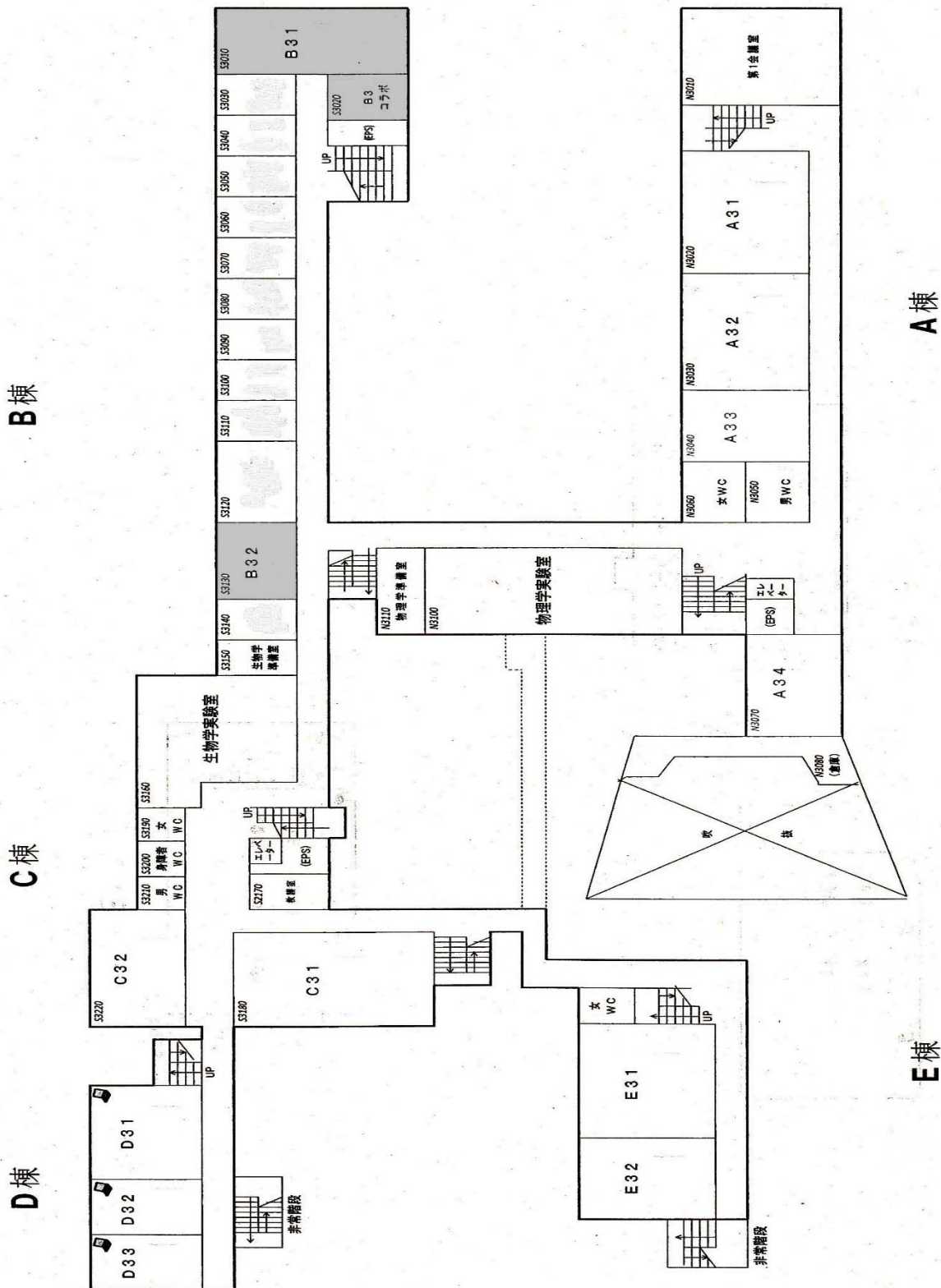




# Floor Plan of Common Education Building (2nd Floor)



# Floor Plan of Common Education Building (3rd Floor)



# Floor Plan of Common Education Building (4<sup>th</sup> Floor)

