

Japanese Language Program

Course Guide

Second Semester, Academic Year 2020

Center for International Affairs

Tottori University

Japanese Language Program Course Guide
Center for International Affairs, Tottori University

CONTENTS

Academic Year 2020 Second Semester Calendar	2
Outline of the Japanese Program	3
Course-by-Course Guide	6
[I] Intensive Japanese Language Course	6
[Z] Common Subjects "Japanese Language" and "Japanese Culture and Society"	8
[P] Japanese Courses by Purpose	10
[N] Comprehensive Japanese Course ("NIKONIKO" Course)	12
Floor Plan of Common Education Building	16

Academic Year 2020 Second Semester Calendar

October

Mon	Tue	Wed	Thu	Fri	Sat	Sun
			1	2	3	4
5	6	7	8	9	10	11
12	13	14	15	16	17	18
19	20	21	22	23	24	25
26	27	28	29	30	31	

November

Mon	Tue	Wed	Thu	Fri	Sat	Sun
						1
2	3	4	5	6	7	8
9	10	11	12	13	14	15
16	17	18	19	20	21	22
23	24	25	26	27	28	29
30						

December

Mon	Tue	Wed	Thu	Fri	Sat	Sun
	1	2	3	4	5	6
7	8	9	10	11	12	13
14	15	16	17	18	19	20
21	22	23	24	25	26	27
28	29	30	31			

Thu., November 5
 Fri., November 20
 Sat., November 14 and Mon., November 30
 Sat., December 26 to Mon., January 4
 Thu., January 7 and Tue., January 12
 Wed., January 13
 Fri., January 15
 Fri., January 29
 Sat., January 23 and Tue., February 9
 Fri., February 5
 Mon., February 8
 Wed., February 10 to Wed., March 31

January

Mon	Tue	Wed	Thu	Fri	Sat	Sun
				1	2	3
4	5	6	7	8	9	10
11	12	13	14	15	16	17
18	19	20	21	22	23	24
25	26	27	28	29	30	31

February

Mon	Tue	Wed	Thu	Fri	Sat	Sun
1	2	3	4	5	6	7
8	9	10	11	12	13	14
15	16	17	18	19	20	21
22	23	24	25	26	27	28

March

Mon	Tue	Wed	Thu	Fri	Sat	Sun
1	2	3	4	5	6	7
8	9	10	11	12	13	14
15	16	17	18	19	20	21
22	23	24	25	26	27	28
29	30	31				

Tuesday classes
 Monday classes
 Reserved days for the 3rd quarter
 Winter Vacation
 Monday classes
 Friday classes
 No lectures
 No lectures
 Reserved days for the 4th quarter
 No lectures
 Friday classes
 Spring Vacation

Outline of the Japanese Program at the Center for International Affairs

1. Courses and Subjects

The Center for International Affairs of Tottori University offers various Japanese courses and subjects for international students. Please refer to "Course-by-Course Guide," which starts on page 6, to learn about the content of each course.

- [I] Intensive Japanese Language Course --> page 6
- [Z] Common Subjects "Japanese Language" and "Japanese Culture and Society" --> page 8
- [P] Japanese Courses by Purpose --> page 10
- [N] Comprehensive Japanese Language Course ("NIKONIKO" Course) --> page 12

2. Courses and subjects that you can take

First, please find out which category you belong to in the student classification. Out of the above courses and subjects, you can take the following courses, depending on your status.

Student Classification	Compulsory Subject	Approved for Credits	Attendance Allowed
① Government-sponsored research students recommended by a Japanese embassy or consulate general (Embassy Recommendation)	[I]		
② Teacher-training students	[I]		
③ Undergraduate students		[Z]	[P]
④ Graduate students			[P], [N]
⑤ Special auditing students (Temporary exchange students)		[Z]	[P], [N]
⑥ Japanese Studies Program students		[Z]	[P], [N]
⑦ Research students			[P], [N]
⑧ Credited special register students, Auditing students (other than ⑤ or ⑥)			[P], [N]

* However, you may be permitted to take other courses or subjects, depending on your current Japanese proficiency level or other conditions.

* [Z] Common Subjects "Japanese Language" and "Japanese Culture and Society" and [P] Japanese Courses by Purpose target students who will be presenting research or writing essays in Japanese.

3. Class

(1) Semesters

One year is divided into two semesters. The first semester starts on April 1 and ends on September 30. The second semester starts on October 1 and ends on March 31 of the next year.

(2) Class Hours

The class hours are as shown below.

Period	Class Hours
1st Period	8:45 a.m. – 10:15 a.m.
2nd Period	8:45 a.m. – 12:00 noon
3rd Period	1:00 p.m. – 2:30 p.m.
4th Period	2:45 p.m. – 4:15 p.m.
5th Period	4:30 p.m. – 6:00 p.m.

(3) Cancellation of lectures

- In the case that there is a weather warning issued for the northern part of Tottori City (Yonago in the case of students of faculty of medicine) at 7 a.m. and that the public transportation service is suspended, the morning (the first and second periods) lectures are cancelled. They will be later conducted on a reserved day.
- In the case that there is a weather warning issued for the northern part of Tottori City (Yonago in the case of students of faculty of medicine) at 11 a.m. and that the public transportation service is suspended, the afternoon (the third, fourth and fifth periods) lectures are cancelled. They will be later conducted on a reserved day.
- Other lecture cancellations are notified when they occur.

(4) Bulletins

Other notifications concerning classes are shown on the bulletin board in the Center for International Affairs Room (1st floor of the Common Education Building) and on the Web page of the Center for International Affairs (<https://www.ciatu.tottori-u.ac.jp/en>). Please check them out every day.

4. Teaching staff at the Center for International Affairs

The following teachers are at the Center for International Affairs. If you have anything that you want to consult on your Japanese language study or life at University etc., please do not hesitate to visit the Center.

The Center for International Affairs is located on the first floor of the Common Education Building.

	氏名	メールアドレス
Director of the Center for International Affairs, Professor	YASUNOBU, Kumi	yasunobu@tottori-u.ac.jp
Professor	ANDO, Takayuki	andota@tottori-u.ac.jp
Professor	IKEDA, Reiko	orikeda@tottori-u.ac.jp
Associate professor	TAKEDA, Hiroshi	h-takeda@tottori-u.ac.jp
Associate professor	OTACHI, Kurie	otachik@tottori-u.ac.jp
Assistant professor	KABURAGI, Emi	ekaburagi@tottori-u.ac.jp

COURSE-BY-COURSE GUIDE

[I] Intensive Japanese Language Course

(1) Target and Objective

This course is offered to government-sponsored international students recommended by embassies (international research students, teacher-training students), etc. In this course, the Japanese language necessary for everyday life and studies is intensively taught so that the students can perform basic self-expression and communication.

(2) Teaching Staff

IKEDA, Reiko: Comprehensive Japanese Seminar, KANJI and Sentence-Building,
Japanese Culture and Society

OTACHI, Kurie: Basic Japanese, Japanese Culture and Society

ANDO, Takayuki: Japanese Culture and Society

TAKEDA, Hiroshi: Japanese Culture and Society, Japanese and Computer

OSHIMA, Izumi: Basic Japanese, KANJI and Sentence-Building

(3) Class Schedule and Rooms

	Mon.	Tue.	Wed.	Thu.	Fri.
1 08:45- 10:15	Basic Japanese B3 Collab	KANJI and Sentence- Building B3 Collab	Basic Japanese B3 Collab	Basic Japanese B3 Collab	KANJI and Sentence- Building B3 Collab
2 10:30- 12:00	Basic Japanese B3 Collab	Basic Japanese B3 Collab	Basic Japanese B3 Collab	Basic Japanese B3 Collab	Basic Japanese B3 Collab
3 13:00- 14:30	Comprehensive Japanese Seminar B3 Collab	Basic Japanese B3 Collab	Japanese and Computer B3 Collab		Basic Japanese B3 Collab
4 14:45- 16:15					Japanese Culture and Society B3 Collab

(4) Course Content and Teaching Materials

BASIC JAPANESE

Using the original textbook *Nihongo Niko Niko* or teaching materials that the teacher makes, you will acquire necessary expressions based on familiar topics so that you will be able to conduct basic communication in Japanese.

KANJI AND SENTENCE-BUILDING

You will learn the basics of KANJI from the textbook *Minna no Nihongo Shokyu I Kanji (English version)* published by *Three A Network* and increase the number of KANJI that you can understand as we pick KANJI that you see in your everyday lives and your technical studies so that you will be able to read and write longer and longer Japanese texts little by little.

COMPREHENSIVE JAPANESE SEMINAR

Items you have already learned will be organized, and you will practice using them. Issues that each learner has will also be resolved.

JAPANESE AND COMPUTER

You will perform basic computer operations and input in Japanese, so that it will help you conduct your research.

JAPANESE CULTURE AND SOCIETY

Various Japanese affairs you need to know as an international student living in Japan will be discussed, and students deepen their knowledge and exchange thoughts.

(5) Examination and Evaluation

Comprehensive evaluation is done, based on the results of mini quizzes and mid-term examinations, course-completion presentations, rate of attendance, activities in class, etc.

(6) Main Schedule

* This course is not held in this semester.

[Z] Common Subjects "Japanese Language" and "Japanese Culture and Society"

(1) Target and Objective

This course is offered to regular undergraduate international students, Japanese Studies Program students, etc. All the subjects in this course can be accredited as undergraduate credits. In the Japanese Language classes, students train to improve academic skills so that they can learn smoothly in their faculties. In the Japanese Culture and Society classes, students will come to understand Japanese affairs deeply by learning through lectures done from a wide viewpoint and investigating a theme that they have picked by themselves.

(2) Teaching Staff

Technique for Expression in Japanese II, Japanese for Regular Undergraduate Students II
: IKEDA, Reiko
Japanese in Practice II: OTACHI, Kurie
Japanese Culture II: ANDO, Takayuki
Japanese Society II: KABURAGI, Emi, and others

(3) Class Schedule and Rooms

	Mon.	Tue.	Wed.	Thu.	Fri.
1					
2					
3 13:00- 14:30	Japanese Society II C41			Japanese for Regular Undergraduate Students II B2 Collab	
4 14:45- 16:15	Japanese in Practice II C41		Technique for Expression in Japanese II B2 Collab		
5 16:30- 18:00			Japanese Culture II Online		

(4) Course Content and Teaching Materials

Please refer to pages 19 to 20 in *Guide to Taking Common Subjects* or the Web Version of the Syllabus in the Tottori University Academic Affairs System.

<https://www.tottori-u.ac.jp/3890.htm>

(5) Registration

Regular undergraduate international students are to lay down a study plan so that you can satisfy the graduation requirements of your own faculty and register to take courses at your own faculty.

You can get one credit from one "Japanese Language" subject and two credits from one "Japanese Culture and Society" subject.

Regular undergraduate international students can convert maximum 8 Japanese Culture and Society credits to liberal-arts credits and can also convert maximum 6 Japanese Language credits to foreign language credits. However, they can only convert maximum 12 credits in total. (Please refer to page 44 in *Guide to Taking Common Subjects*.)

Japanese Studies Program students and special auditing students are to register at their own faculty, too.

As for "Japanese for Regular Undergraduate Students II," it is only offered to regular undergraduate international students only.

(6) Examination and Evaluation

Please refer to the syllabus.

(7) Main Schedule

The schedule is the same as that for the common subjects.

Thu., October 1	Class starts
Thu., November 5	Tuesday classes
Fri., November 20	Monday classes
Sat., November 14 and Mon., November 30	Reserved days for the 3rd quarter
Sat., December 26 to Mon., January 4	Winter Vacation
Thu., January 7 and Tue., January 12	Monday classes
Wed., January 13	Friday classes
Sat., January 23 and Tue., February 9	Reserved days for the 4th quarter
Mon., February 1 to Mon., February 8	Periodic Examinations

[P] Japanese Courses by Purpose

(1) Target, Objective, and Course Content

"N1 Japanese" or "N2 Japanese" which is offered to those wishing to take N1 or N2, expands students' abilities in grammar, vocabulary, characters, reading and listening.

"Case-based Learning for Cross-cultural Communication" helps you improve your cross-cultural understanding and communication capabilities in Japanese by using teaching materials based on cases of cross-cultural encounters.

"Report Writing Seminar" is offered to international students who need to write reports in Japanese. They will learn how to write reports and essays in Japanese.

(2) Teaching Staff

N1 Japanese, N2 Japanese and Case-based Learning for Cross-cultural Communication:
OSHIMA, Izumi

Report Writing Seminar: IKEDA, Reiko

(3) Class Schedule and Rooms

	Mon.	Tue.	Wed.	Thu.	Fri.
1 8:45- 10:15	N1 Japanese (Grammar) B21			N2 Japanese (Listening and Reading) B3 Collab	
2 10:30- 12:00	N2 Japanese (Grammar) B3 Collab	Case-based Learning for Cross-cultural Communication B2 Collab		N1 Japanese (Listening and Reading) B21	
3					
4 14:45- 16:15		Report Writing Seminar B2 Collab			
5					

(4) Teaching Materials

The teaching staff makes the teaching materials and distributes them.

(5) Registration

Please fill out the following online form by Friday, October 23 with the approval of your supervisor.

<https://www.ciatu.tottori-u.ac.jp/online-application/jp-prog>

* Authentication Code : nihongo

(6) Examination and Evaluation

In "Case-based Learning for Cross-cultural Communication" and "Report Writing Seminar" evaluation will be done based on presentations and essays. Certificates of course completion will be issued to students whose marks and attendance rates are both 60% or higher.

Evaluation will not be done for "N1 Japanese" and "N2 Japanese". Certificates of course completion will not be issued for it, either.

(7) Main Schedule

Mon., October 12	"N1 Japanese" and "N2 Japanese" start
Tue., October 20	"Case-based Learning for Cross-cultural Communication" and "Report Writing Seminar" start
Fri., October 23	Deadline for course registration
Thu., November 5	Tuesday classes
Fri., November 20	Monday classes
Sat., November 14 and Mon., November 30	Reserved days for the 3rd quarter
Sat., December 26 to Mon., January 4	Winter Vacation
Thu., January 7 and Tue., January 12	Monday classes
Sat., January 23 and Tue., February 9	Reserved days for the 4th quarter
Thu., February 4	Course ends.

[N] Comprehensive Japanese Language Course ("NIKONIKO" Course)

(1) Target and Objective

This course is for graduate students, research students, etc. It will improve Japanese abilities needed for everyday life and self-expressions or basic Japanese abilities in a way that fits each student's current Japanese proficiency level.

Tottori Campus	Yonago Campus	
Japanese A		Students who learn Japanese for the first time.
Japanese B	Elementary 1	Students who can speak simple Japanese. (Students who have taken 50 to 100 hours of Japanese lessons.)
Japanese C	Elementary 2	Students who can perform basic communication in Japanese in everyday lives. (Students who have taken 200 to 300 hours of Japanese lessons.)
Japanese D	Intermediate	Students who can make themselves roughly understood in Japanese. (Students who have taken 300 hours of Japanese lessons or more.)
KANJI Workshop		All the students who want to study kanji.

(2) Teaching Staff

Tottori Campus

Japanese A: ITO, Kuniko and OSHIMA, Izumi

Japanese B: ITO, Kuniko and MURATA, Kazuko

Japanese C: MURATA, Kazuko and KAWAGUCHI, Feifei

Japanese D: MURATA, Kazuko and ITO Kuniko

KANJI Workshop: OTACHI, Kurie

Yonago Campus

Elementary 1, Elementary 2, and Intermediate : TSUCHIE, Kanako

(3) Class Schedule and Rooms

Tottori Campus

	Mon.	Tue.	Wed.	Thu.	Fri.
1 08:45-10:15	Japanese B B32	Japanese B B32	Japanese B B32		
	Japanese D B2 Collab	Japanese D B2 Collab	Japanese D B2 Collab		
2					
3 13:00-14:30		KANJI Workshop Language Shower Room			
4					
5 16:30-18:00	Japanese A B21	Japanese A B21	Japanese A B21	Japanese A B21	
		Japanese C B2 Collab	Japanese C B2 Collab	Japanese C B2 Collab	

Yonago Campus

	Wed.
1	
2 10:30-12:00	Elementary 2 Tutorial Room
3 13:00-14:30	Elementary 1 Tutorial Room
4 14:45-16:15	Intermediate Tutorial Room
5	

(4) Course Content and Teaching Materials

Tottori Campus

JAPANESE A

This course will develop your basic communication skills in Japanese as it helps you acquire necessary expressions, based on topics which the original textbook *Nihongo Niko Niko*.

JAPANESE B

Based on the latter half of the textbook *Dekiru Nihongo Shokyu* published by Alc, students will learn basic sentence patterns and expressions so that they can perform better communication. Students will also learn to read and write relatively short articles, using the first half of *Tanoshii Yomimono 55* published by Alc.

JAPANESE C

Based on the textbook *Dekiru Nihongo Sho-chukyu* published by Alc, students will learn new expressions by connecting them with the expressions they have already acquired so that they will be able to understand and express situations and feelings more accurately. Students will also learn to read and write relatively long articles, using the latter half of *Tanoshii Yomimono 55* published by Alc.

JAPANESE D

By using the textbook *Dekiru Nihongo Chukyu* published by Alc, students will improve their thinking power and communicative competence for attaining the goal of their action, based on the theme of each unit. Also, composition time is set up once a week, and students practice so that they can summarize their opinions about a designated topic appropriately or write a text that fits the purpose or situation.

KANJI WORKSHOP

You will choose a textbook that fits you, and you will study KANJI at your own pace with a Japanese student partner. (If you have your own KANJI textbook, please bring it.)

Yonago Campus

ELEMENTARY 1

By referring to the textbook *Nihongo de Hanashimasho* published by Langue, students will improve their basic communication skills in Japanese, acquiring necessary expressions.

ELEMENTARY 2

Referring to the textbook *Tsunagu Nihongo Shokyu 1* published by ASK, students will improve their communication skills, focusing on conversations needed in laboratories.

INTERMEDIATE

Referring to the textbook *Tsunagu Nihongo Shokyu 2* published by ASK, students will

learn Japanese so that they can form smooth human relationships through Japanese, focusing on conversations needed in laboratories.

(5) Registration

Please fill out the following online form by Friday, October 23 with the approval of your supervisor. <https://www.ciatu.tottori-u.ac.jp/online-application/jp-prog>

* Authentication Code : nihongo

(6) Examination and Evaluation

Evaluation is based on the examination and attendance rates.

Certificates of course completion will be issued to students whose test scores and attendance rates are both 60% or higher.

(7) Main Schedule

Wed., October 14	Course Orientation Session (Tottori Campus)
Mon., October 19	Class starts.
Fri., October 23	Deadline for course registration
Thu., November 5	Tuesday classes
Fri., November 20	Monday classes
Sat., November 14 and Mon., November 30	Reserved days for the 3rd quarter
Sat., December 26 to Mon., January 4	Winter Vacation
Thu., January 7 and Tue., January 12	Monday classes
Wed., January 13	Friday classes
Sat., January 23 and Tue., February 9	Reserved days for the 4th quarter
Mon., February 1 to Mon., February 8	Term-end examinations
Wed., March 3, 10, 17	Spring class (Yonago Campus)

(8) Others

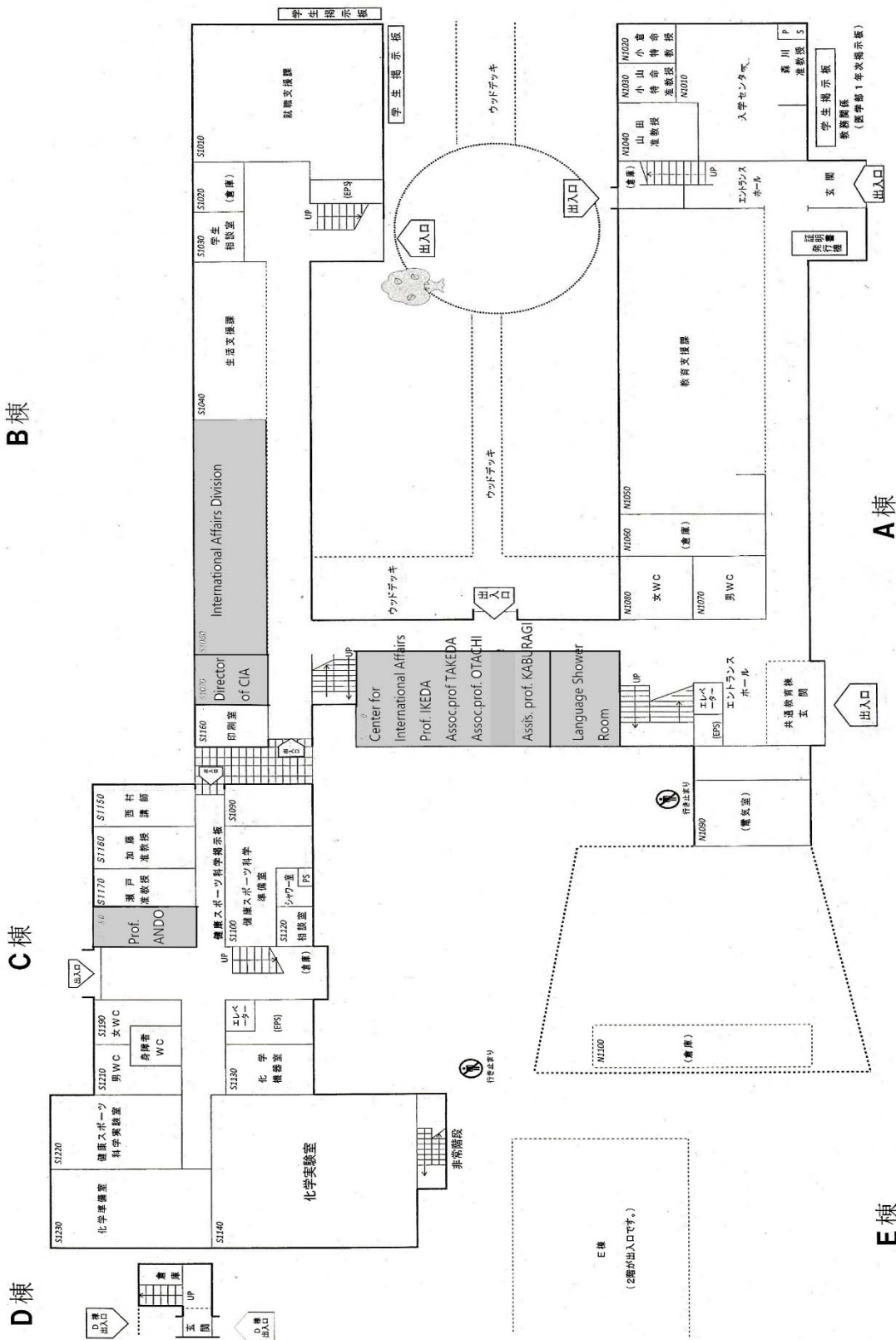
· Textbooks will be lent to students in "Japanese B," "Japanese C," "Japanese D," and "KANJI Workshop." Since they belong to the Center for International Affairs, please do not write anything directly in the textbooks. If you wish to purchase any of these textbooks, please contact the Center.

· You can transfer to another class within four weeks from the start of the course and only in the case that the teacher in charge thinks it appropriate for you to do so.

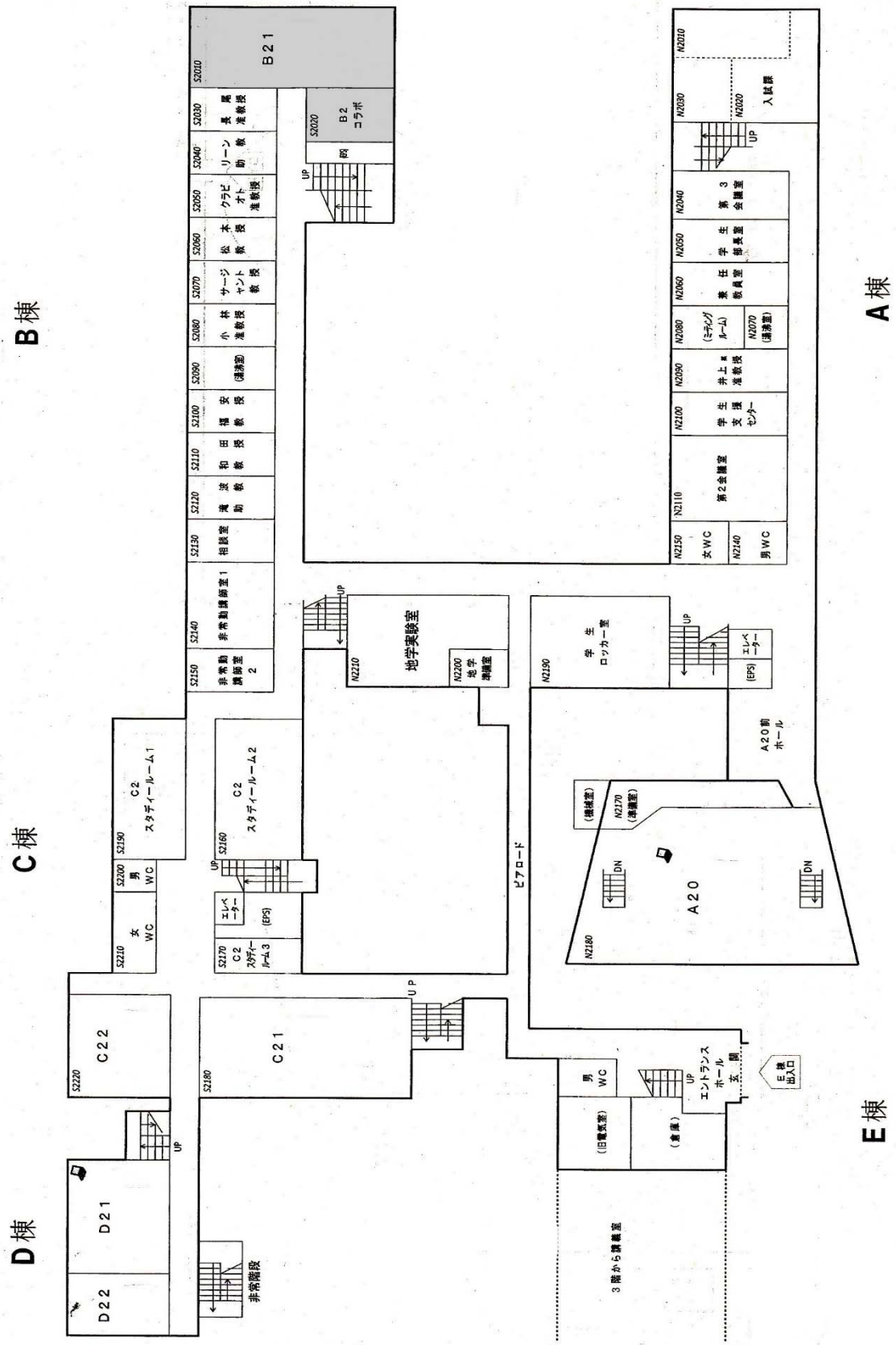
· In the case that your arrival to Japan is delayed, you can register for these courses if you have already learned Japanese, but if you are a beginner of Japanese, you must wait until the next semester to participate in these courses.

Floor Plan of Common Education Building (1st Floor)

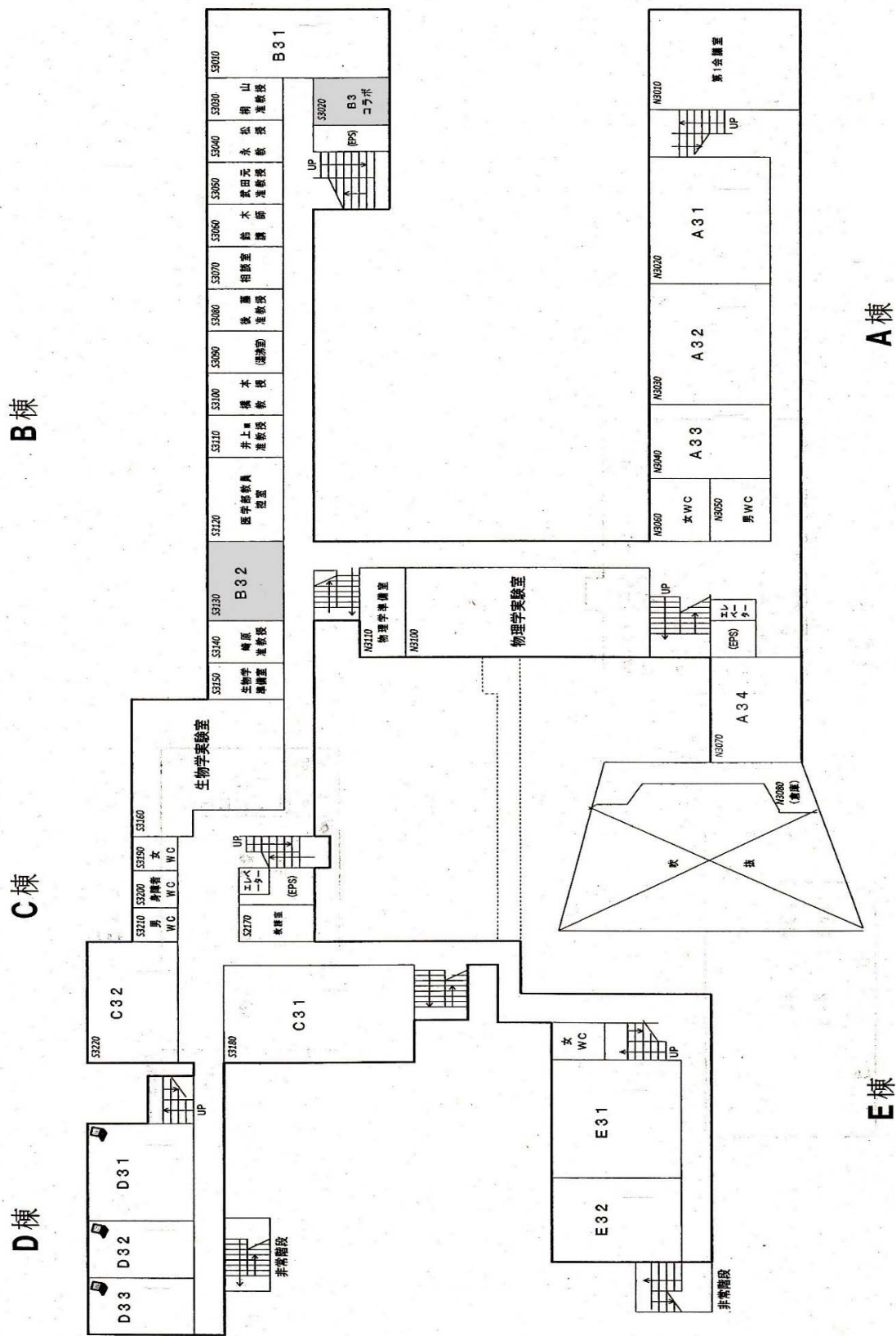
共通教育棟 (1階)



Floor Plan of Common Education Building (2nd Floor)



Floor Plan of Common Education Building (3rd Floor)



Floor Plan of Common Education Building (4th Floor)

