

Japanese Language Program

Course Guide

First Semester, Academic Year 2019

Center for International Affairs

Tottori University

Japanese Language Program Course Guide
Center for International Affairs, Tottori University

CONTENTS

Academic Year 2019 First Semester Calendar	2
Outline of the Japanese Program	3
Course-by-Course Guide	6
[I] Intensive Japanese Language Course	6
[Z] Common Subjects "Japanese Language" and "Japanese Culture and Society"	8
[L] Japanese for Campus Life	10
[P] Japanese Courses by Purpose	11
[N] Comprehensive Japanese Course ("NIKONIKO" Course)	13
Floor Plan of Common Education Building	17

Academic Year 2019 First Semester Calendar

April

Mon	Tue	Wed	Thu	Fri	Sat	Sun
1	2	3	4	5	6	7
8	9	10	11	12	13	14
15	16	17	18	19	20	21
22	23	24	25	26	27	28
29	30					

July

Mon	Tue	Wed	Thu	Fri	Sat	Sun
1	2	3	4	5	6	7
8	9	10	11	12	13	14
15	16	17	18	19	20	21
22	23	24	25	26	27	28
29	30	31				

May

Mon	Tue	Wed	Thu	Fri	Sat	Sun
		1	2	3	4	5
6	7	8	9	10	11	12
13	14	15	16	17	18	19
20	21	22	23	24	25	26
27	28	29	30	31		

August

Mon	Tue	Wed	Thu	Fri	Sat	Sun
			1	2	3	4
5	6	7	8	9	10	11
12	13	14	15	16	17	18
19	20	21	22	23	24	25
26	27	28	29	30	31	

June

Mon	Tue	Wed	Thu	Fri	Sat	Sun
					1	2
3	4	5	6	7	8	9
10	11	12	13	14	15	16
17	18	19	20	21	22	23
24	25	26	27	28	29	30

September

Mon	Tue	Wed	Thu	Fri	Sat	Sun
						1
2	3	4	5	6	7	8
9	10	11	12	13	14	15
16	17	18	19	20	21	22
23	24	25	26	27	28	29
30						

Mon., April 1 to Mon., April 8

Tue., May 7

Sat., June 1

Wed., June 12 and Thu., June 13

Fri., July 19

Sat., August 10 and Sun., August 11

Mon., August 12 to Mon., September 30

Spring Vacation

Monday classes

University Memorial Day

Reserved days for the first quarter

Monday classes

Reserved days for the second quarter

Summer Vacation

Outline of the Japanese Program at the Center for International Affairs

1. Courses and Subjects

The Center for International Affairs of Tottori University offers various Japanese courses and subjects for international students. Please refer to "Course-by-Course Guide," which starts on page 6, to learn about the content of each course.

- [I] Intensive Japanese Language Course --> page 6
- [Z] Common Subjects "Japanese Language" and "Japanese Culture and Society" --> page 8
- [L] Japanese for Campus Life --> page 10
- [P] Japanese Courses by Purpose --> page 11
- [N] Comprehensive Japanese Language Course ("NIKONIKO" Course) --> page 13

2. Courses and subjects that you can take

First, please find out which category you belong to in the student classification. Out of the above courses and subjects, you can take the following courses, depending on your status.

Student Classification	Compulsory Subject	Approved for Credits	Attendance Allowed
① Government-sponsored research students recommended by a Japanese embassy or consulate general (Embassy Recommendation)	[I]		
② Teacher-training students	[I]		
③ Undergraduate students		[Z]	[L]
④ Graduate students			[P], [N]
⑤ Special auditing students (Temporary exchange students)		[Z]	[P], [N]
⑥ Japanese Studies Program students		[Z]	[P], [N]
⑦ Research students			[P], [N]
⑧ Credited special register students, Auditing students (other than ⑤ or ⑥)			[P], [N]

* However, you may be permitted to take other courses or subjects, depending on your current Japanese proficiency level or other conditions.

3. Class

(1) Semesters

One year is divided into two semesters. The first semester starts on April 1 and ends on September 30. The second semester starts on October 1 and ends on March 31 of the next year.

(2) Class Hours

The class hours are as shown below.

Period	Class Hours
1st Period	8:45 a.m. – 10:15 a.m.
2nd Period	8:45 a.m. – 12:00 noon
3rd Period	1:00 p.m. – 2:30 p.m.
4th Period	2:45 p.m. – 4:15 p.m.
5th Period	4:30 p.m. – 6:00 p.m.

(3) Cancellation of lectures

· In the case that there is a weather warning issued for the northern part of Tottori City (Yonago in the case of students of faculty of medicine) at 7 a.m. and that the public transportation service is suspended, the morning (the first and second periods) lectures are cancelled. They will be later conducted on a reserved day.

· In the case that there is a weather warning issued for the northern part of Tottori City (Yonago in the case of students of faculty of medicine) at 11 a.m. and that the public transportation service is suspended, the afternoon (the third, fourth and fifth periods) lectures are cancelled. They will be later conducted on a reserved day.

· Other lecture cancellations are notified when they occur.

(4) Bulletins

Other notifications concerning classes are shown on the bulletin board in the Center for International Affairs Room (1st floor of the Common Education Building) and on the Web page of the Center for International Affairs (<https://www.ciatu.tottori-u.ac.jp/en>). Please check them out every day.

4. Teaching staff at the Center for International Affairs

The following teachers are at the Center for International Affairs. If you have anything that you want to consult on your Japanese language study or life at University etc., please do not hesitate to visit the Center.

The Center for International Affairs is located on the first floor of the Common Education Building.

	氏名	メールアドレス
Director of the Center for International Affairs	YASUNOBU, Kumi	yasunobu@tottori-u.ac.jp
Professor	ANDO, Takayuki	andota@tottori-u.ac.jp
Professor	IKEDA, Reiko	orikeda@tottori-u.ac.jp
Associate professor	TAKEDA, Hiroshi	h-takeda@tottori-u.ac.jp
Associate professor	OTACHI, Kurie	otachik@tottori-u.ac.jp
Associate professor	Roxana PARADA	roxana113@tottori-u.ac.jp

COURSE-BY-COURSE GUIDE

[I] Intensive Japanese Language Course

(1) Target and Objective

This course is offered to government-sponsored international students recommended by embassies (international research students, teacher-training students), etc. In this course, the Japanese language necessary for everyday life and studies is intensively taught so that the students can perform basic self-expression and communication.

(2) Teaching Staff

IKEDA, Reiko: Comprehensive Japanese Seminar, KANJI and Sentence-Building,
Japanese Culture and Society

OTACHI, Kurie: Basic Japanese, Japanese Culture and Society

Roxana PARADA: Japanese Culture and Society, Japanese and Computer

ANDO, Takayuki: Japanese Culture and Society

TAKEDA, Hiroshi: Japanese Culture and Society

OSHIMA, Izumi: Basic Japanese, KANJI and Sentence-Building

(3) Class Schedule and Rooms

	Mon.	Tue.	Wed.	Thu.	Fri.
1 08:45- 10:15	Basic Japanese B3 Collab	KANJI and Sentence- Building B3 Collab	Basic Japanese B3 Collab	Basic Japanese B3 Collab	KANJI and Sentence- Building B3 Collab
2 10:30- 12:00	Basic Japanese B3 Collab	Basic Japanese B3 Collab	Basic Japanese B3 Collab	Basic Japanese B3 Collab	Basic Japanese B3 Collab
3 13:00- 14:30	Comprehensive Japanese Seminar B3 Collab	Basic Japanese B3 Collab	Japanese and Computer B3 Collab		Basic Japanese B3 Collab
4 14:45- 16:15					Japanese Culture and Society B3 Collab

(4) Course Content and Teaching Materials

BASIC JAPANESE

Using the original textbook *Nihongo Niko Niko* or teaching materials that the teacher makes, you will acquire necessary expressions based on familiar topics so that you will be able to conduct basic communication in Japanese.

KANJI AND SENTENCE-BUILDING

You will learn the basics of KANJI from the textbook *Minna no Nihongo Shokyu I Kanji (English version)* published by *Three A Network* and increase the number of KANJI that you can understand as we pick KANJI that you see in your everyday lives and your technical studies so that you will be able to read and write longer and longer Japanese texts little by little.

COMPREHENSIVE JAPANESE SEMINAR

Items you have already learned will be organized, and you will practice using them. Issues that each learner has will also be resolved.

JAPANESE AND COMPUTER

You will perform basic computer operations and input in Japanese, so that it will help you conduct your research.

JAPANESE CULTURE AND SOCIETY

Various Japanese affairs you need to know as an international student living in Japan will be discussed, and students deepen their knowledge and exchange thoughts.

(5) Examination and Evaluation

Comprehensive evaluation is done, based on the results of mini quizzes and mid-term examinations, course-completion presentations, rate of attendance, activities in class, etc.

(6) Main Schedule

* This course is not held in this semester.

[Z] Common Subjects "Japanese Language" and "Japanese Culture and Society"

(1) Target and Objective

This course is offered to regular undergraduate international students, Japanese Studies Program students, etc. All the subjects in this course can be accredited as undergraduate credits. In the Japanese Language classes, students train to improve academic skills so that they can learn smoothly in their faculties. In the Japanese Culture and Society classes, students will come to understand Japanese affairs deeply by learning through lectures done from a wide viewpoint and investigating a theme that they have picked by themselves.

(2) Teaching Staff

Technique for Expression in Japanese I, Japanese for Regular Undergraduate Students I

: IKEDA, Reiko

Japanese in Practice I: OTACHI, Kurie

Japanese Culture I: ANDO, Takayuki

Japanese Society I: OTACHI, Kurie, and others

(3) Class Schedule and Rooms

	Mon.	Tue.	Wed.	Thu.	Fri.
1					
2 10:30-12:00			Japanese Society I C41		
3 13:00-14:30	Japanese Society I C41			Japanese for Regular Undergraduate Students I B32	
4 14:45-16:15	Japanese in Practice I C41		Technique for Expression in Japanese I C41		
5					

(4) Course Content and Teaching Materials

Please refer to pages 19 to 20 and page 81 in *Guide to Taking Common Subjects* or the Web Version of the Syllabus in the Tottori University Academic Affairs System.

http://syllabus.adm.tottori-u.ac.jp/ext_syllabus/syllabusSearchDirect.do?nologin=on

(5) Registration

Regular undergraduate international students are to lay down a study plan so that you can satisfy the graduation requirements of your own faculty and register to take courses at your own faculty.

You can get one credit from one "Japanese Language" subject and two credits from one "Japanese Culture and Society" subject.

Regular undergraduate international students can convert maximum 8 Japanese Culture and Society credits to liberal-arts credits and can also convert maximum 6 Japanese Language credits to foreign language credits. However, they can only convert maximum 12 credits in total. (Please refer to page 44 in *Guide to Taking Common Subjects*.)

Japanese Studies Program students and special auditing students are to register at their own faculty, too.

As for "Japanese for Regular Undergraduate Students I," it is only offered to regular undergraduate international students only.

(6) Examination and Evaluation

Please refer to the syllabus.

(7) Main Schedule

The schedule is the same as that for the common subjects.

Tue., April 9	Class starts
Tue., May 7	Monday classes
Wed., June 12 and Thu., June 13	Reserved days for the first quarter
Fri., July 19	Monday classes
Mon., August 5 to Fri., August 9	Periodic Examinations
Sat., August 10 to Sun., August 11	Reserved days for the second quarter

[L] Japanese for Campus Life

(1) Target, Objective, and Course Content

This course is for international students studying as first-year undergraduate students. The course helps you improve your cross-cultural understanding and communication capabilities in Japanese by using teaching materials based on cases of cross-cultural encounters.

(2) Teaching Staff OSHIMA, Izumi

(3) Class Schedule and Rooms

	Mon.	Tue.	Wed.	Thu.	Fri
1 8:45-10:15	Japanese for Campus Life A B3 Collab				
2					
3					
4					
5 16:30-18:00		Japanese for Campus Life B B3 Collab			

*** Please choose A or B.**

(4) Teaching Materials

The teaching staff makes the teaching materials and distributes them.

(5) Registration

First-year undergraduate students will be directly notified. (No registration is needed.)

(6) Examination and Evaluation

Evaluation is based on the classroom attitude, presentation, etc.

Certificates of course completion will be issued to students whose marks and attendance rates are both 60% or higher.

(7) Main Schedule

Tue., April 9 Class starts.
 Tue., May 7 Monday classes
 Fri., July 19 Monday classes
 Tue., July 30 Class ends.

[P] Japanese Courses by Purpose

(1) Target, Objective, and Course Content

"Preparation for the Japanese Language Proficiency Test," which is offered to those wishing to take N1 or N2, expands students' abilities in grammar, vocabulary, characters, reading and listening.

"Paper Writing Seminar" is offered to international students who need to write papers in Japanese. They will learn how to write essays and papers in Japanese.

(2) Teaching Staff

Preparation for the Japanese Language Proficiency Test: OSHIMA, Izumi

Paper Writing Seminar: IKEDA, Reiko

(3) Class Schedule and Rooms

	Mon.	Tue.	Wed.	Thu.	Fri.
1 8:45- 10:15				Preparation for the Japanese Language Proficiency Test N1/A B32	
2 10:30- 12:00	Preparation for the Japanese Language Proficiency Test N2 B3 Collab			Preparation for the Japanese Language Proficiency Test N1/B B32	
3					
4					
5 16:30- 18:00		Paper Writing Seminar A34			

*** Choose A or B for Preparation for the Japanese Language Proficiency Test N1.**

(4) Teaching Materials

The teaching staff makes the teaching materials and distributes them.

(5) Registration

Please write the subjects that you wish to take on the course registration form, get your supervisor's seal on it, and submit it to the International Affairs Division by Friday, April 26.

(6) Examination and Evaluation

Evaluation will not be done for "Preparation for the Japanese Language Proficiency Test." Certificates of course completion will not be issued for it, either.

In "Paper Writing Seminar" evaluation will be done, based on presentations and essays. Certificates of course completion will be issued to students whose marks and attendance rates are both 60% or higher.

(7) Main Schedule

Thu., April 11	Class starts.
Fri., April 26	Deadline for course registration
Tue., May 7	Monday classes
Wed., June 12 and Thu., June 13	Reserved days for the first quarter
Thu., July 4	"Preparation for the Japanese Language Proficiency Test" course ends.
Tue., July 30	"Paper Writing Seminar" course ends.

[N] Comprehensive Japanese Language Course ("NIKONIKO" Course)

(1) Target and Objective

This course is for graduate students, research students, etc. It will improve Japanese abilities needed for everyday life and self-expressions or basic Japanese abilities in a way that fits each student's current Japanese proficiency level.

Tottori Campus	Yonago Campus	
Japanese A		Students who learn Japanese for the first time.
Japanese B	Elementary 1	Students who can speak simple Japanese. (Students who have taken 50 to 100 hours of Japanese lessons.)
Japanese C	Elementary 2	Students who can perform basic communication in Japanese in everyday lives. (Students who have taken 200 to 300 hours of Japanese lessons.)
Japanese D	Intermediate	Students who can make themselves roughly understood in Japanese. (Students who have taken 300 hours of Japanese lessons or more.)
KANJI Workshop		All the students who want to study kanji.

(2) Teaching Staff

Tottori Campus

Japanese A: ITO, Kuniko

Japanese B: ITO, Kuniko and MURATA, Kazuko

Japanese C: MURATA, Kazuko and KAWAGUCHI, Feifei

Japanese D: MURATA, Kazuko and ITO Kuniko

KANJI Workshop: OTACHI, Kurie

Yonago Campus

Elementary 1, Elementary 2, and Intermediate : TSUCHIE, Kanako

(3) Class Schedule and Rooms

Tottori Campus

	Mon.	Tue.	Wed.	Thu.	Fri.
1 08:45-10:15	Japanese B B32	Japanese B B32	Japanese B B32		
	Japanese D B2 Collab	Japanese D B2 Collab	Japanese D B2 Collab		
2					
3					
4 14:45-16:15		KANJI Workshop Language Shower Room			
5 16:30-18:00	Japanese A B21	Japanese A B21	Japanese A B21	Japanese A B21	
		Japanese C B2 Collab	Japanese C B2 Collab	Japanese C B2 Collab	

Yonago Campus

米子地区

	Wed.
1	
2 10:30-12:00	Elementary 2 Tutorial Room
3 13:00-14:30	Elementary 1 Tutorial Room
4 14:45-16:15	Intermediate Tutorial Room
5	

(4) Course Content and Teaching Materials

Tottori Campus

JAPANESE A

This course will develop your basic communication skills in Japanese as it helps you acquire necessary expressions, based on topics which the original textbook *Nihongo Niko*

Niko.

JAPANESE B

Based on the latter half of the textbook *Dekiru Nihongo Shokyu* published by Alc, students will learn basic sentence patterns and expressions so that they can perform better communication. Students will also learn to read and write relatively short articles, using the first half of *Tanoshii Yomimono 55* published by Alc.

JAPANESE C

Based on the textbook *Dekiru Nihongo Sho-chukyu* published by Alc, students will learn new expressions by connecting them with the expressions they have already acquired so that they will be able to understand and express situations and feelings more accurately. Students will also learn to read and write relatively long articles, using the latter half of *Tanoshii Yomimono 55* published by Alc.

JAPANESE D

By using the textbook *Dekiru Nihongo Chukyu* published by Alc, students will improve their thinking power and communicative competence for attaining the goal of their action, based on the theme of each unit. Also, composition time is set up once a week, and students practice so that they can summarize their opinions about a designated topic appropriately or write a text that fits the purpose or situation.

KANJI WORKSHOP

You will choose a textbook that fits you, and you will study KANJI at your own pace with a Japanese student partner. (If you have your own KANJI textbook, please bring it.)

Yonago Campus

ELEMENTARY 1

By referring to the textbook *NIHONGO Breakthrough From survival to communication in Japanese* published by JAL Academy, and *Nihongo de Hanashimasho* published by Langue, students will improve their basic communication skills in Japanese, acquiring necessary expressions.

ELEMENTARY 2

Referring to the textbook *Tsunagu Nihongo Shokyu 1* published by ASK, students will improve their communication skills, focusing on conversations needed in laboratories.

INTERMEDIATE

Referring to the textbook *Tsunagu Nihongo Shokyu 2* published by ASK, students will learn Japanese so that they can form smooth human relationships through Japanese, focusing on conversations needed in laboratories.

(5) Registration

Please write the subjects that you wish to take on the course registration form, get your supervisor's seal on it, and submit it to the International Affairs Division by Friday, April 26.

(6) Examination and Evaluation

Evaluation is based on the examination and attendance rates.

Certificates of course completion will be issued to students whose test scores and attendance rates are both 60% or higher.

(7) Main Schedule

Wed., April 10	Course Orientation Session (Tottori Campus)
Mon., April 15	Class starts.
Fri., April 26	Deadline for registration forms
Tue., May 7	Monday classes
Wed., June 12 and Thu., June 13	Reserved days for the first quarter
Fri., July 19	No lectures (Monday classes for the entire University)
Mon., July 29 to Thu., August 1	Term-end examinations
Wed., September 4, 11, 18	Summer class (Yonago Campus)

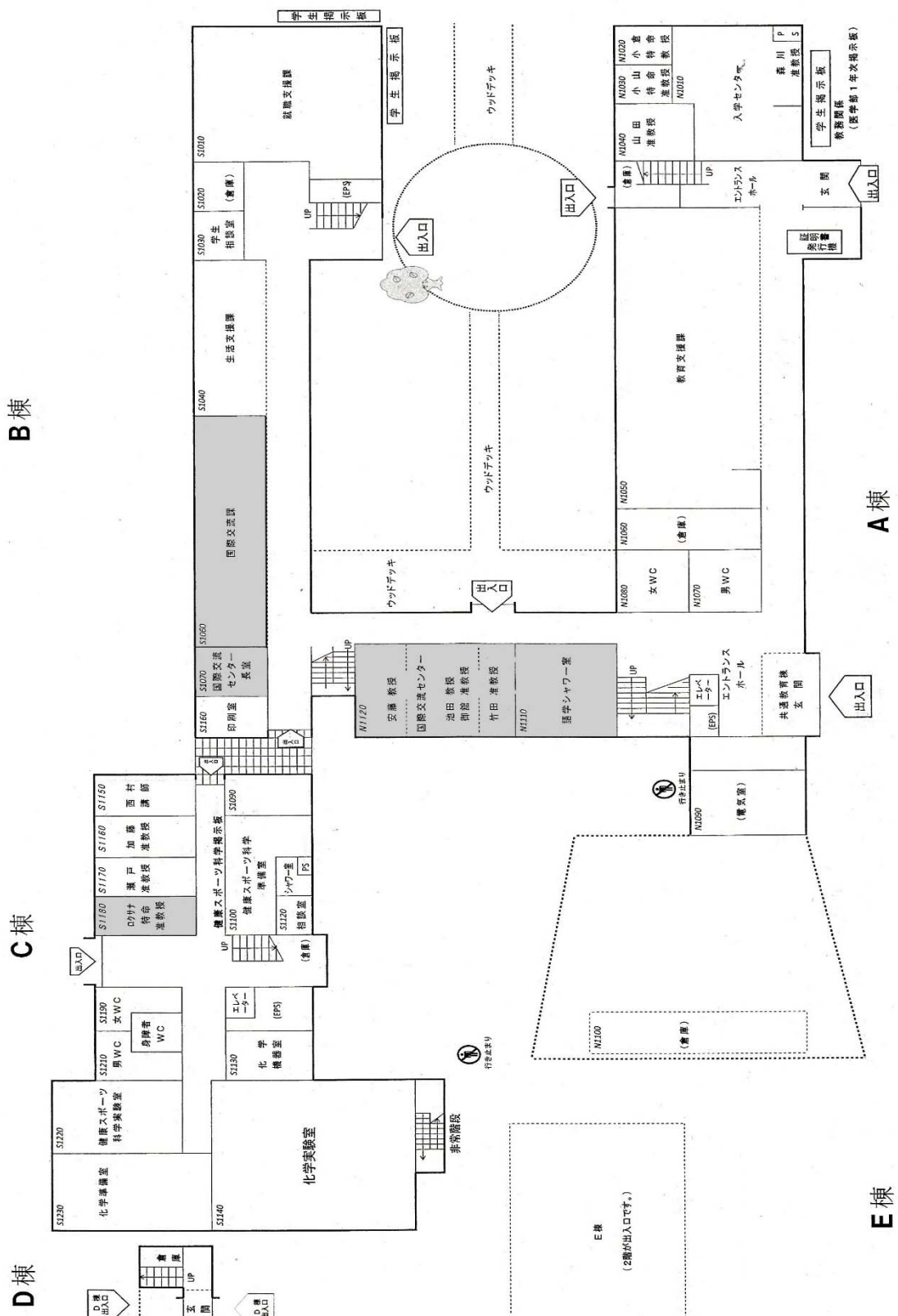
(8) Others

· Textbooks will be lent to students in "Japanese B," "Japanese C," "Japanese D," and "KANJI Workshop." Since they belong to the Center for International Affairs, please do not write anything directly in the textbooks. If you wish to purchase any of these textbooks, please contact the Center.

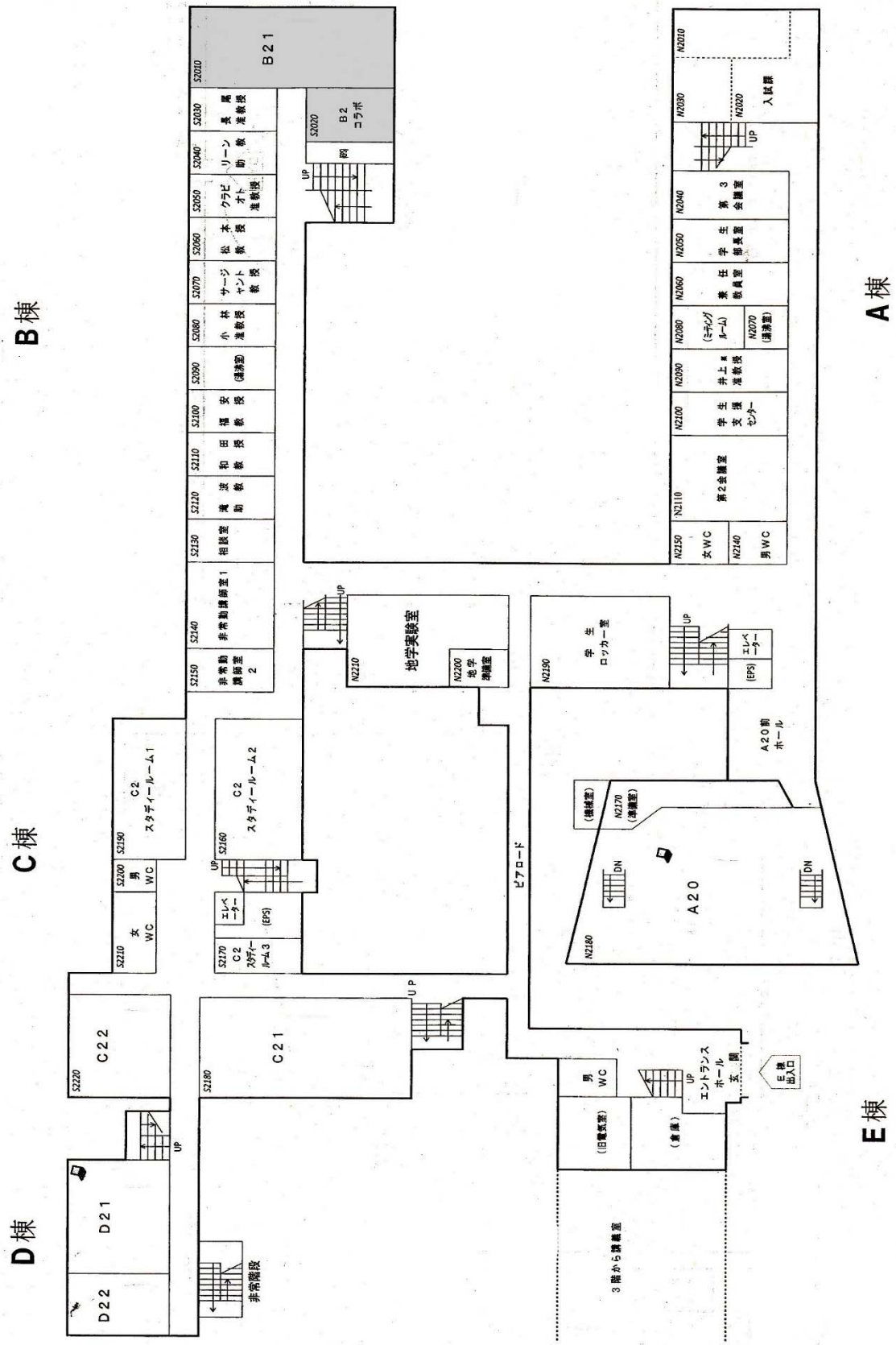
· You can transfer to another class within four weeks from the start of the course and only in the case that the teacher in charge thinks it appropriate for you to do so.

· In the case that your arrival to Japan is delayed, you can register for these courses if you have already learned Japanese, but if you are a beginner of Japanese, you must wait until the next semester to participate in these courses.

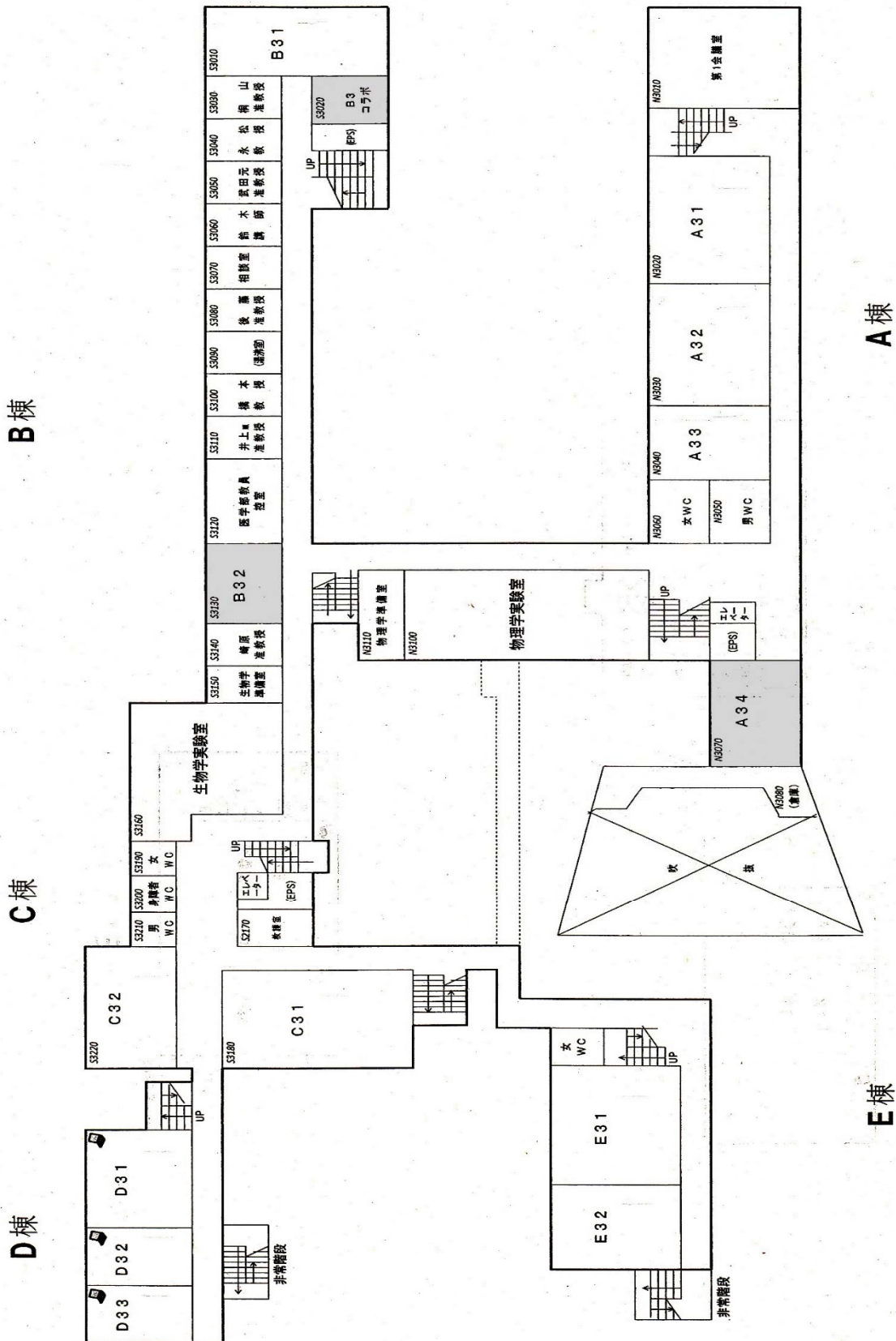
Floor Plan of Common Education Building (1st Floor)



Floor Plan of Common Education Building (2nd Floor)



Floor Plan of Common Education Building (3rd Floor)



Floor Plan of Common Education Building (4th Floor)

