

INTERNATIONAL STUDENT & RESEARCHER MEDICAL EXAMINATION

… 留学生と研究者の健康診断のお知らせ …



DATE & TIME

日時

PLACE

場所

① 11 OCTOBER (Thu.) 14:00~15:30

② 18 OCTOBER (Thu.) 14:30~15:30

Administration Office Building 3F

事務局棟 3階



INSPECTIONS

検査項目

1. HEIGHT & WEIGHT
身長・体重測定

2. BLOOD PRESSURE
血压測定

3. URINE TEST
尿検査

4. X-RAY
胸部X線撮影

5. TUBERCULOSIS TEST*
T-SPOT

! Attention !
Student ID Card

should be needed at
the reception.

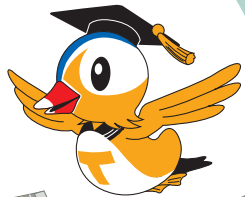


* Qualified for T-SPOT:

New students enrolled in October 2018 & Those who never had the test at Tottori University

鳥取大学国際交流課

International Affairs Division, Tottori University



Tottori University <Tottori> Campus Map

Issued by: Public Relations Center (TEL +81-857-31-5750)

<http://www.tottori-u.ac.jp>

