

Japanese Language Program

Course Guide

Second Semester, Academic Year 2019

Center for International Affairs

Tottori University

Japanese Language Program Course Guide
Center for International Affairs, Tottori University

CONTENTS

Academic Year 2019 Second Semester Calendar	2
Outline of the Japanese Program	3
Course-by-Course Guide	6
[I] Intensive Japanese Language Course	6
[Z] Common Subjects "Japanese Language" and "Japanese Culture and Society"	8
[P] Japanese Courses by Purpose	10
[N] Comprehensive Japanese Course ("NIKONIKO" Course)	12
Floor Plan of Common Education Building	16

Academic Year 2019 Second Semester Calendar

October

Mon	Tue	Wed	Thu	Fri	Sat	Sun
	1	2	3	4	5	6
7	8	9	10	11	12	13
14	15	16	17	18	19	20
21	22	23	24	25	26	27
28	29	30	31			

January

Mon	Tue	Wed	Thu	Fri	Sat	Sun
		1	2	3	4	5
6	7	8	9	10	11	12
13	14	15	16	17	18	19
20	21	22	23	24	25	26
27	28	29	30	31		

November

Mon	Tue	Wed	Thu	Fri	Sat	Sun
				1	2	3
4	5	6	7	8	9	10
11	12	13	14	15	16	17
18	19	20	21	22	23	24
25	26	27	28	29	30	

February

Mon	Tue	Wed	Thu	Fri	Sat	Sun
					1	2
3	4	5	6	7	8	9
10	11	12	13	14	15	16
17	18	19	20	21	22	23
24	25	26	27	28	29	

December

Mon	Tue	Wed	Thu	Fri	Sat	Sun
						1
2	3	4	5	6	7	8
9	10	11	12	13	14	15
16	17	18	19	20	21	22
23	24	25	26	27	28	29
30	31					

March

Mon	Tue	Wed	Thu	Fri	Sat	Sun
						1
2	3	4	5	6	7	8
9	10	11	12	13	14	15
16	17	18	19	20	21	22
23	24	25	26	27	28	29
30	31					

Thu., October 17

Monday classes

Wed., November 6

Monday classes

Fri., November 29 and Mon., December 2

Reserved days for the third quarter

Wed., December 25

Friday classes

Fri., December 27 to Sun., January 5

Winter Vacation

Tue., January 14

Monday classes

Thu., January 16

Friday classes

Fri., January 17

No lectures

Fri., February 7 and Mon., February 10

Reserved days for the fourth quarter

Tue., February 11 to Tue., March 31

Spring Vacation

Outline of the Japanese Program at the Center for International Affairs

1. Courses and Subjects

The Center for International Affairs of Tottori University offers various Japanese courses and subjects for international students. Please refer to "Course-by-Course Guide," which starts on page 6, to learn about the content of each course.

- [I] Intensive Japanese Language Course --> page 6
- [Z] Common Subjects "Japanese Language" and "Japanese Culture and Society" --> page 8
- [P] Japanese Courses by Purpose --> page 10
- [N] Comprehensive Japanese Language Course ("NIKONIKO" Course) --> page 12

2. Courses and subjects that you can take

First, please find out which category you belong to in the student classification. Out of the above courses and subjects, you can take the following courses, depending on your status.

Student Classification	Compulsory Subject	Approved for Credits	Attendance Allowed
① Government-sponsored research students recommended by a Japanese embassy or consulate general (Embassy Recommendation)	[I]		
② Teacher-training students	[I]		
③ Undergraduate students		[Z]	[P]
④ Graduate students			[P], [N]
⑤ Special auditing students (Temporary exchange students)		[Z]	[P], [N]
⑥ Japanese Studies Program students		[Z]	[P], [N]
⑦ Research students			[P], [N]
⑧ Credited special register students, Auditing students (other than ⑤ or ⑥)			[P], [N]

* However, you may be permitted to take other courses or subjects, depending on your current Japanese proficiency level or other conditions.

* [Z] Common Subjects "Japanese Language" and "Japanese Culture and Society" and [P] Japanese Courses by Purpose target students who will be presenting research or writing essays in Japanese.

3. Class

(1) Semesters

One year is divided into two semesters. The first semester starts on April 1 and ends on September 30. The second semester starts on October 1 and ends on March 31 of the next year.

(2) Class Hours

The class hours are as shown below.

Period	Class Hours
1st Period	8:45 a.m. – 10:15 a.m.
2nd Period	8:45 a.m. – 12:00 noon
3rd Period	1:00 p.m. – 2:30 p.m.
4th Period	2:45 p.m. – 4:15 p.m.
5th Period	4:30 p.m. – 6:00 p.m.

(3) Cancellation of lectures

· In the case that there is a weather warning issued for the northern part of Tottori City (Yonago in the case of students of faculty of medicine) at 7 a.m. and that the public transportation service is suspended, the morning (the first and second periods) lectures are cancelled. They will be later conducted on a reserved day.

· In the case that there is a weather warning issued for the northern part of Tottori City (Yonago in the case of students of faculty of medicine) at 11 a.m. and that the public transportation service is suspended, the afternoon (the third, fourth and fifth periods) lectures are cancelled. They will be later conducted on a reserved day.

· Other lecture cancellations are notified when they occur.

(4) Bulletins

Other notifications concerning classes are shown on the bulletin board in the Center for International Affairs Room (1st floor of the Common Education Building) and on the Web page of the Center for International Affairs (<https://www.ciatu.tottori-u.ac.jp/en>). Please check them out every day.

4. Teaching staff at the Center for International Affairs

The following teachers are at the Center for International Affairs. If you have anything that you want to consult on your Japanese language study or life at University etc., please do not hesitate to visit the Center.

The Center for International Affairs is located on the first floor of the Common Education Building.

	氏名	メールアドレス
Director of the Center for International Affairs, Professor	YASUNOBU, Kumi	yasunobu@tottori-u.ac.jp
Professor	ANDO, Takayuki	andota@tottori-u.ac.jp
Professor	IKEDA, Reiko	orikeda@tottori-u.ac.jp
Associate professor	TAKEDA, Hiroshi	h-takeda@tottori-u.ac.jp
Associate professor	OTACHI, Kurie	otachik@tottori-u.ac.jp
Specially Appointed Associate professor	Roxana PARADA	roxana113@tottori-u.ac.jp
Assistant professor	KABURAGI, Emi	

COURSE-BY-COURSE GUIDE

[I] Intensive Japanese Language Course

(1) Target and Objective

This course is offered to government-sponsored international students recommended by embassies (international research students, teacher-training students), etc. In this course, the Japanese language necessary for everyday life and studies is intensively taught so that the students can perform basic self-expression and communication.

(2) Teaching Staff

IKEDA, Reiko: Comprehensive Japanese Seminar, KANJI and Sentence-Building,
Japanese Culture and Society

OTACHI, Kurie: Basic Japanese, Japanese Culture and Society

Roxana PARADA: Japanese Culture and Society, Japanese and Computer

ANDO, Takayuki: Japanese Culture and Society

TAKEDA, Hiroshi: Japanese Culture and Society

OSHIMA, Izumi: Basic Japanese, KANJI and Sentence-Building

(3) Class Schedule and Rooms

	Mon.	Tue.	Wed.	Thu.	Fri.
1 08:45- 10:15	Basic Japanese B3 Collab	KANJI and Sentence- Building B3 Collab	Basic Japanese B3 Collab	Basic Japanese B3 Collab	KANJI and Sentence- Building B3 Collab
2 10:30- 12:00	Basic Japanese B3 Collab	Basic Japanese B3 Collab	Basic Japanese B3 Collab	Basic Japanese B3 Collab	Basic Japanese B3 Collab
3 13:00- 14:30	Comprehensive Japanese Seminar B3 Collab	Basic Japanese B3 Collab	Japanese and Computer B3 Collab		Basic Japanese B3 Collab
4 14:45- 16:15					Japanese Culture and Society B3 Collab

(4) Course Content and Teaching Materials

BASIC JAPANESE

Using the original textbook *Nihongo Niko Niko* or teaching materials that the teacher makes, you will acquire necessary expressions based on familiar topics so that you will be able to conduct basic communication in Japanese.

KANJI AND SENTENCE-BUILDING

You will learn the basics of KANJI from the textbook *Minna no Nihongo Shokyu I Kanji (English version)* published by *Three A Network* and increase the number of KANJI that you can understand as we pick KANJI that you see in your everyday lives and your technical studies so that you will be able to read and write longer and longer Japanese texts little by little.

COMPREHENSIVE JAPANESE SEMINAR

Items you have already learned will be organized, and you will practice using them. Issues that each learner has will also be resolved.

JAPANESE AND COMPUTER

You will perform basic computer operations and input in Japanese, so that it will help you conduct your research.

JAPANESE CULTURE AND SOCIETY

Various Japanese affairs you need to know as an international student living in Japan will be discussed, and students deepen their knowledge and exchange thoughts.

(5) Examination and Evaluation

Comprehensive evaluation is done, based on the results of mini quizzes and mid-term examinations, course-completion presentations, rate of attendance, activities in class, etc.

(6) Main Schedule

* This course is not held in this semester.

[Z] Common Subjects "Japanese Language" and "Japanese Culture and Society"

(1) Target and Objective

This course is offered to regular undergraduate international students, Japanese Studies Program students, etc. All the subjects in this course can be accredited as undergraduate credits. In the Japanese Language classes, students train to improve academic skills so that they can learn smoothly in their faculties. In the Japanese Culture and Society classes, students will come to understand Japanese affairs deeply by learning through lectures done from a wide viewpoint and investigating a theme that they have picked by themselves. In ‘Computer Skills in Japanese’, you will learn basic operation of PC and how to input Japanese sentences. It will help your research activity in Japanese.

(2) Teaching Staff

Technique for Expression in Japanese II, Japanese for Regular Undergraduate Students II

: IKEDA, Reiko

Japanese in Practice II: OTACHI, Kurie

Japanese Culture II: ANDO, Takayuki

Japanese Society II: OTACHI, Kurie, and others

Computer Skills in Japanese: TAKEDA, Hiroshi

(3) Class Schedule and Rooms

	Mon.	Tue.	Wed.	Thu.	Fri.
1					
2 10:30-12:00		Computer Skills in Japanese C41	Japanese Culture II C41		
3 13:00-14:30	Japanese Society II C41			Japanese for Regular Undergraduate Students II B32	
4 14:45-16:15	Japanese in Practice II C41		Technique for Expression in Japanese II C41		
5					

(4) Course Content and Teaching Materials

Please refer to pages 19 to 20 and page 81 in *Guide to Taking Common Subjects* or the Web Version of the Syllabus in the Tottori University Academic Affairs System.

http://syllabus.adm.tottori-u.ac.jp/ext_syllabus/syllabusSearchDirect.do?nologin=on

(5) Registration

Regular undergraduate international students are to lay down a study plan so that you can satisfy the graduation requirements of your own faculty and register to take courses at your own faculty.

You can get one credit from one "Japanese Language" subject and two credits from one "Japanese Culture and Society" subject.

Regular undergraduate international students can convert maximum 8 Japanese Culture and Society credits to liberal-arts credits and can also convert maximum 6 Japanese Language credits to foreign language credits. However, they can only convert maximum 12 credits in total. (Please refer to page 44 in *Guide to Taking Common Subjects*.)

Japanese Studies Program students and special auditing students are to register at their own faculty, too.

As for "Japanese for Regular Undergraduate Students II," it is only offered to regular undergraduate international students only.

(6) Examination and Evaluation

Please refer to the syllabus.

(7) Main Schedule

The schedule is the same as that for the common subjects.

Tue., October 1	Class starts
Thu., October 17	Monday classes
Wed., November 6	Monday classes
Fri., November 29 and Mon., December 2	Reserved days for the third quarter
Wed., December 25	Friday classes
Fri., December 27 to Sun., January 5	Winter Vacation
Tue., January 14	Monday classes
Thu., January 16	Friday classes
Fri., January 31 to Thu., February 6	Periodic Examinations
Fri., February 7 and Mon., February 10	Reserved days for the fourth quarter

[P] Japanese Courses by Purpose

(1) Target, Objective, and Course Content

"N1 Japanese" course which is offered to those wishing to take JLPT N1, expands students' abilities in grammar, reading and listening.

"Business Communication" class helps you improve your cross-cultural understanding and business communication capabilities in Japanese by using teaching materials based on cases of cross-cultural encounters.

"Paper Writing Seminar" is offered to international students who need to write papers in Japanese. They will learn how to write essays and papers in Japanese.

(2) Teaching Staff

N1 Japanese, Business Communication, and Paper Writing Seminar: OSHIMA, Izumi

(3) Class Schedule and Rooms

	Mon.	Tue.	Wed.	Thu.	Fri.
1 8:45- 10:15				Business Communication B2 Collab	
2 10:30- 12:00	N1 Japanese (Grammar) B2 Collab			Paper Writing Seminar B2 Collab	
3 13:00- 14:30			N1 Japanese (Listening and Reading) B2 Collab		
4					
5					

(4) Teaching Materials

The teaching staff makes the teaching materials and distributes them.

(5) Registration

Please write the subjects that you wish to take on the course registration form, get your supervisor's seal on it, and submit it to the International Affairs Division by Friday, October 25.

(6) Examination and Evaluation

Evaluation will not be done for "N1 Japanese" course. Certificates of course completion will not be issued for it, either.

In "Business Communication" and "Paper Writing Seminar" evaluation will be done, based on presentations and essays. Certificates of course completion will be issued to students whose marks and attendance rates are both 60% or higher.

(7) Main Schedule

Mon., October 7	Class starts
Thu., October 17	Monday classes
Fri., October 25	Deadline for course registration
Wed., November 6	Monday classes
Fri., November 29 and Mon., December 2	Reserved days for the third quarter
Wed., December 25	Friday classes
Fri., December 27 to Sun., January 5	Winter Vacation
Tue., January 14	Monday classes
Thu., January 16	Friday classes
Thu., February 6	Course ends.

[N] Comprehensive Japanese Language Course ("NIKONIKO" Course)

(1) Target and Objective

This course is for graduate students, research students, etc. It will improve Japanese abilities needed for everyday life and self-expressions or basic Japanese abilities in a way that fits each student's current Japanese proficiency level.

Tottori Campus	Yonago Campus	
Japanese A		Students who learn Japanese for the first time.
Japanese B	Elementary 1	Students who can speak simple Japanese. (Students who have taken 50 to 100 hours of Japanese lessons.)
Japanese C	Elementary 2	Students who can perform basic communication in Japanese in everyday lives. (Students who have taken 200 to 300 hours of Japanese lessons.)
Japanese D	Intermediate	Students who can make themselves roughly understood in Japanese. (Students who have taken 300 hours of Japanese lessons or more.)
KANJI Workshop		All the students who want to study kanji.

(2) Teaching Staff

Tottori Campus

Japanese A: ITO, Kuniko

Japanese B: ITO, Kuniko and MURATA, Kazuko

Japanese C: MURATA, Kazuko and KAWAGUCHI, Feifei

Japanese D: MURATA, Kazuko and ITO Kuniko

KANJI Workshop: OTACHI, Kurie

Yonago Campus

Elementary 1, Elementary 2, and Intermediate : TSUCHIE, Kanako

(3) Class Schedule and Rooms

Tottori Campus

	Mon.	Tue.	Wed.	Thu.	Fri.
1 08:45-10:15	Japanese B B2 Collab	Japanese B B2 Collab	Japanese B B2 Collab		
	Japanese D B32	Japanese D B32	Japanese D B32		
2					
3					
4 14:45-16:15		KANJI Workshop Language Shower Room			
5 16:30-18:00	Japanese A B21	Japanese A B21	Japanese A B21	Japanese A B21	
		Japanese C B2 Collab	Japanese C B2 Collab	Japanese C B2 Collab	

Yonago Campus

	Wed.
1	
2 10:30-12:00	Elementary 2 Tutorial Room
3 13:00-14:30	Elementary 1 Tutorial Room
4 14:45-16:15	Intermediate Tutorial Room
5	

(4) Course Content and Teaching Materials

Tottori Campus

JAPANESE A

This course will develop your basic communication skills in Japanese as it helps you acquire necessary expressions, based on topics which the original textbook *Nihongo Niko Niko*.

JAPANESE B

Based on the latter half of the textbook *Dekiru Nihongo Shokyu* published by Alc, students will learn basic sentence patterns and expressions so that they can perform better communication. Students will also learn to read and write relatively short articles, using the first half of *Tanoshii Yomimono 55* published by Alc.

JAPANESE C

Based on the textbook *Dekiru Nihongo Sho-chukyu* published by Alc, students will learn new expressions by connecting them with the expressions they have already acquired so that they will be able to understand and express situations and feelings more accurately. Students will also learn to read and write relatively long articles, using the latter half of *Tanoshii Yomimono 55* published by Alc.

JAPANESE D

By using the textbook *Dekiru Nihongo Chukyu* published by Alc, students will improve their thinking power and communicative competence for attaining the goal of their action, based on the theme of each unit. Also, composition time is set up once a week, and students practice so that they can summarize their opinions about a designated topic appropriately or write a text that fits the purpose or situation.

KANJI WORKSHOP

You will choose a textbook that fits you, and you will study KANJI at your own pace with a Japanese student partner. (If you have your own KANJI textbook, please bring it.)

Yonago Campus

ELEMENTARY 1

By referring to the textbook *Nihongo de Hanashimasho* published by Langue, students will improve their basic communication skills in Japanese, acquiring necessary expressions.

ELEMENTARY 2

Referring to the textbook *Tsunagu Nihongo Shokyu 1* published by ASK, students will improve their communication skills, focusing on conversations needed in laboratories.

INTERMEDIATE

Referring to the textbook *Tsunagu Nihongo Shokyu 2* published by ASK, students will

learn Japanese so that they can form smooth human relationships through Japanese, focusing on conversations needed in laboratories.

(5) Registration

Please write the subjects that you wish to take on the course registration form, get your supervisor's seal on it, and submit it to the International Affairs Division by Friday, October 25.

(6) Examination and Evaluation

Evaluation is based on the examination and attendance rates.

Certificates of course completion will be issued to students whose test scores and attendance rates are both 60% or higher.

(7) Main Schedule

Mon., September 30	Course Orientation Session (Tottori Campus)
Mon., October 7	Class starts.
Thu., October 17	Monday classes
Fri., October 25	Deadline for registration forms
Wed., November 6	Monday classes
Fri., November 29 and Mon., December 2	Reserved days for the third quarter
Wed., December 25	No lectures (Friday classes for the entire University)
Fri., December 27 to Sun., January 5	Winter Vacation
Mon., January 6	No lectures
Tue., January 14	Monday classes
Thu., January 16	No lectures (Friday classes for the entire University)
Mon., January 27 to Thu., January 30	Term-end examinations
Wed., March 4, 11, 18	Spring class (Yonago Campus)

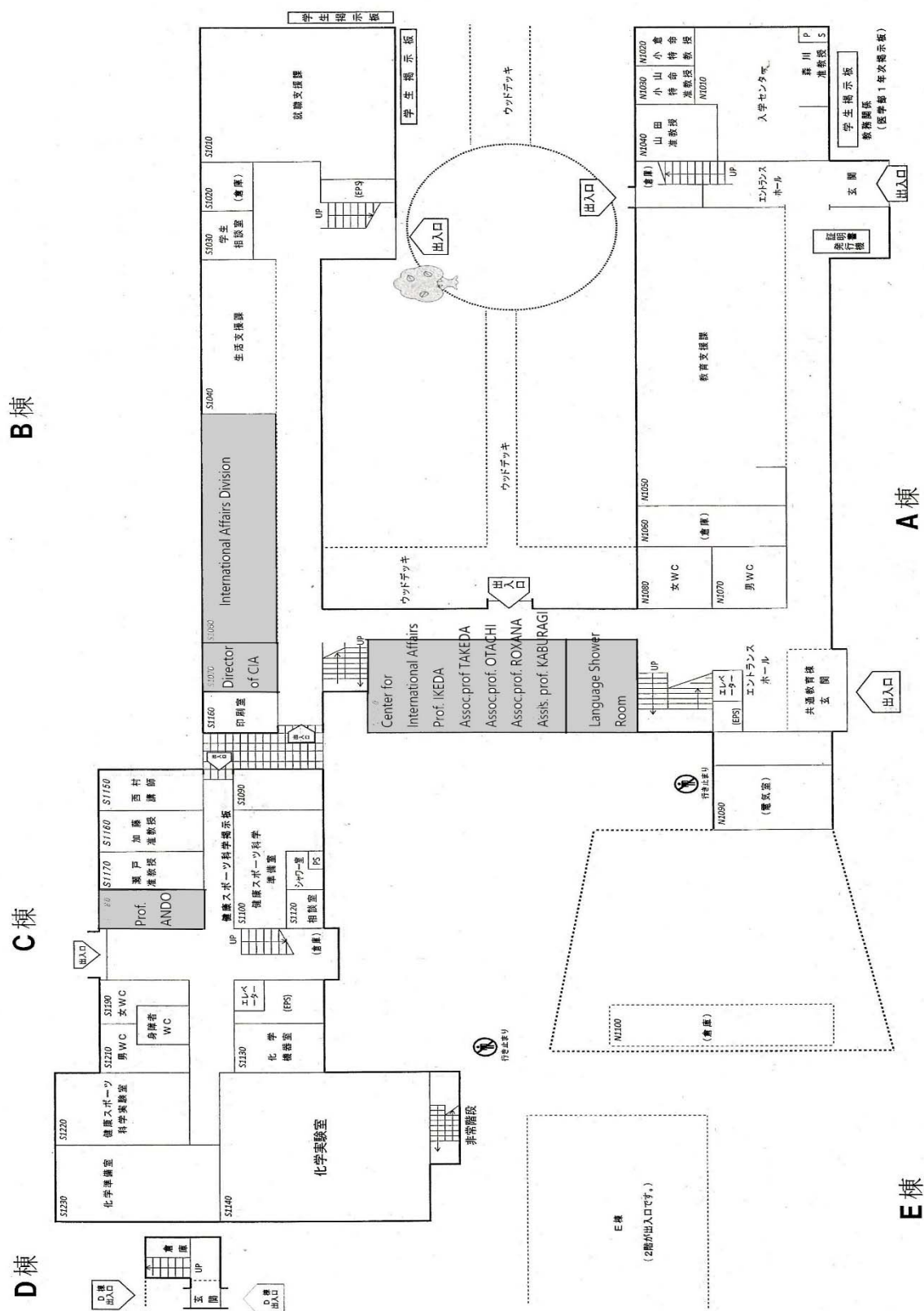
(8) Others

· Textbooks will be lent to students in "Japanese B," "Japanese C," "Japanese D," and "KANJI Workshop." Since they belong to the Center for International Affairs, please do not write anything directly in the textbooks. If you wish to purchase any of these textbooks, please contact the Center.

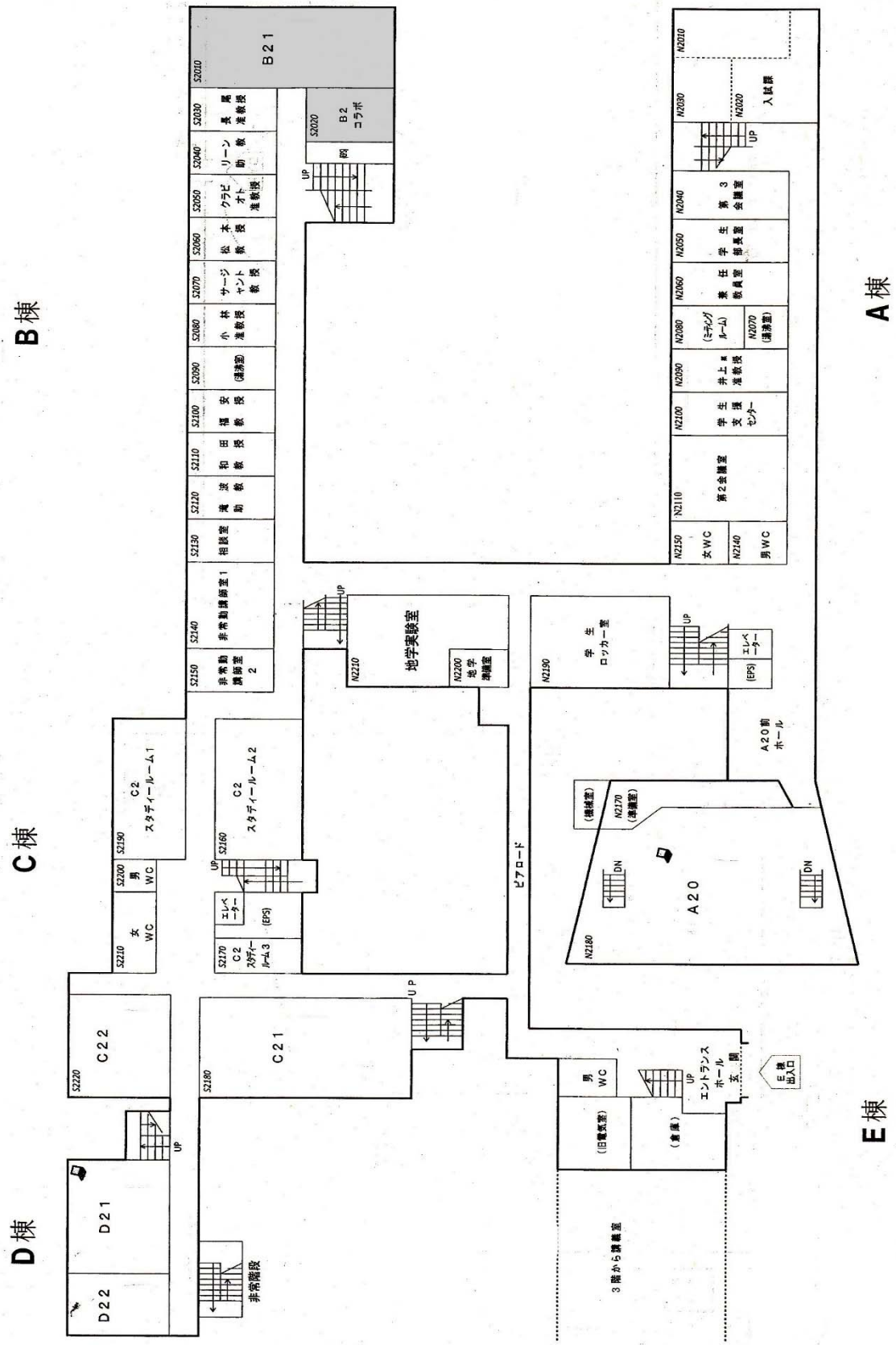
· You can transfer to another class within four weeks from the start of the course and only in the case that the teacher in charge thinks it appropriate for you to do so.

· In the case that your arrival to Japan is delayed, you can register for these courses if you have already learned Japanese, but if you are a beginner of Japanese, you must wait until the next semester to participate in these courses.

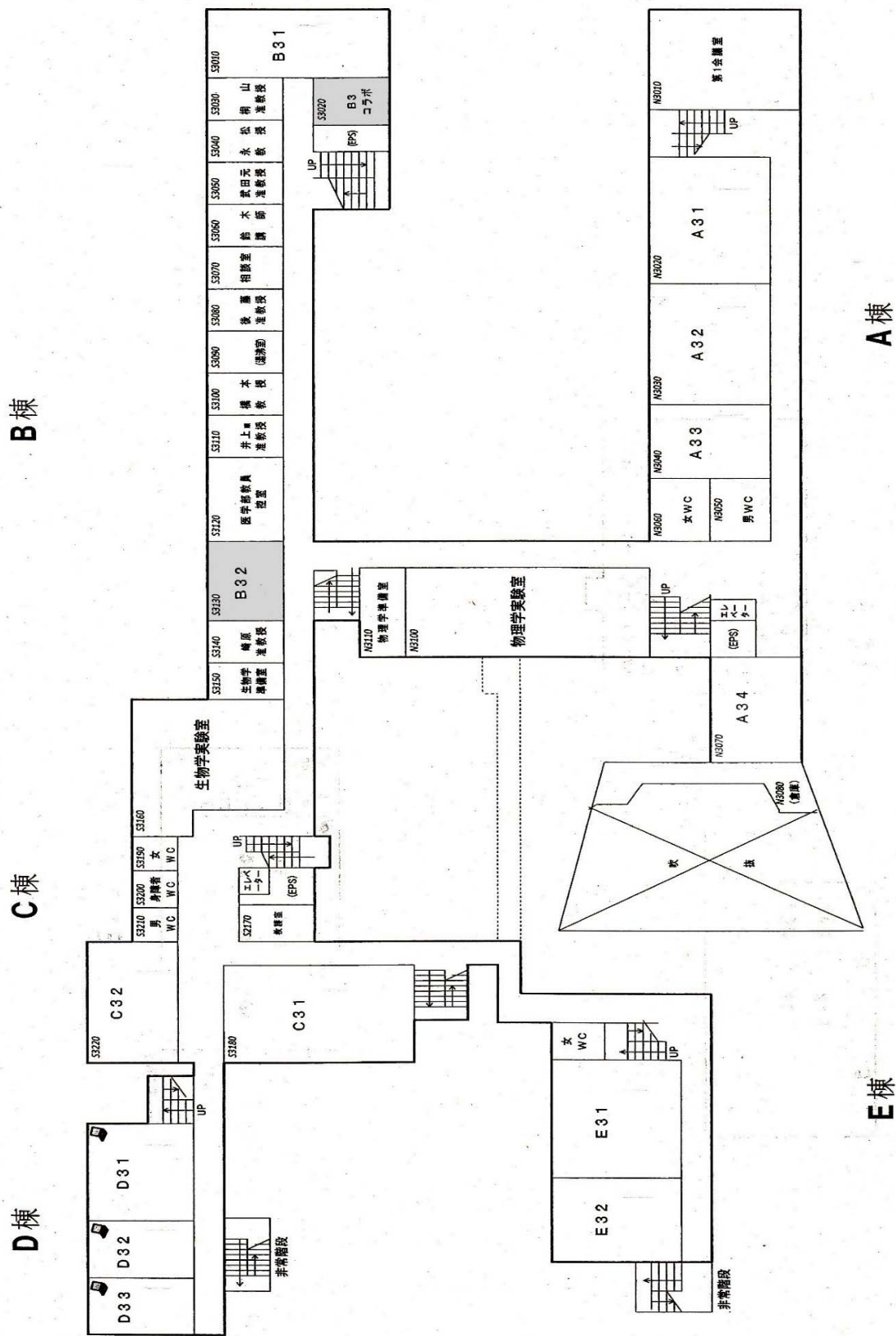
Floor Plan of Common Education Building (1st Floor)



Floor Plan of Common Education Building (2nd Floor)



Floor Plan of Common Education Building (3rd Floor)



Floor Plan of Common Education Building (4th Floor)

