

INTERNATIONAL STUDENT & RESEARCHER MEDICAL EXAMINATION

… 留学生と研究者の健康診断のお知らせ …



DATE & TIME

日時

PLACE

場所

① 11 OCTOBER (Thu.) 14:00~15:30

② 18 OCTOBER (Thu.) 15:00~16:30

Administration Office Building 3F

事務局棟 3階



INSPECTIONS

検査項目

1. HEIGHT & WEIGHT
身長・体重測定

2. BLOOD PRESSURE
血压測定

3. URINE TEST
尿検査

4. X-RAY
胸部X線撮影

5. TUBERCULOSIS TEST*
T-SPOT

! Attention !
Student ID Card

should be needed at
the reception.

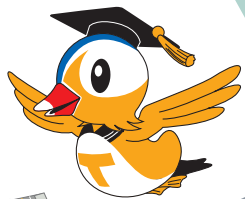


* Qualified for T-SPOT:

New students enrolled in October 2018 & Those who never had the test at Tottori University

鳥取大学国際交流課

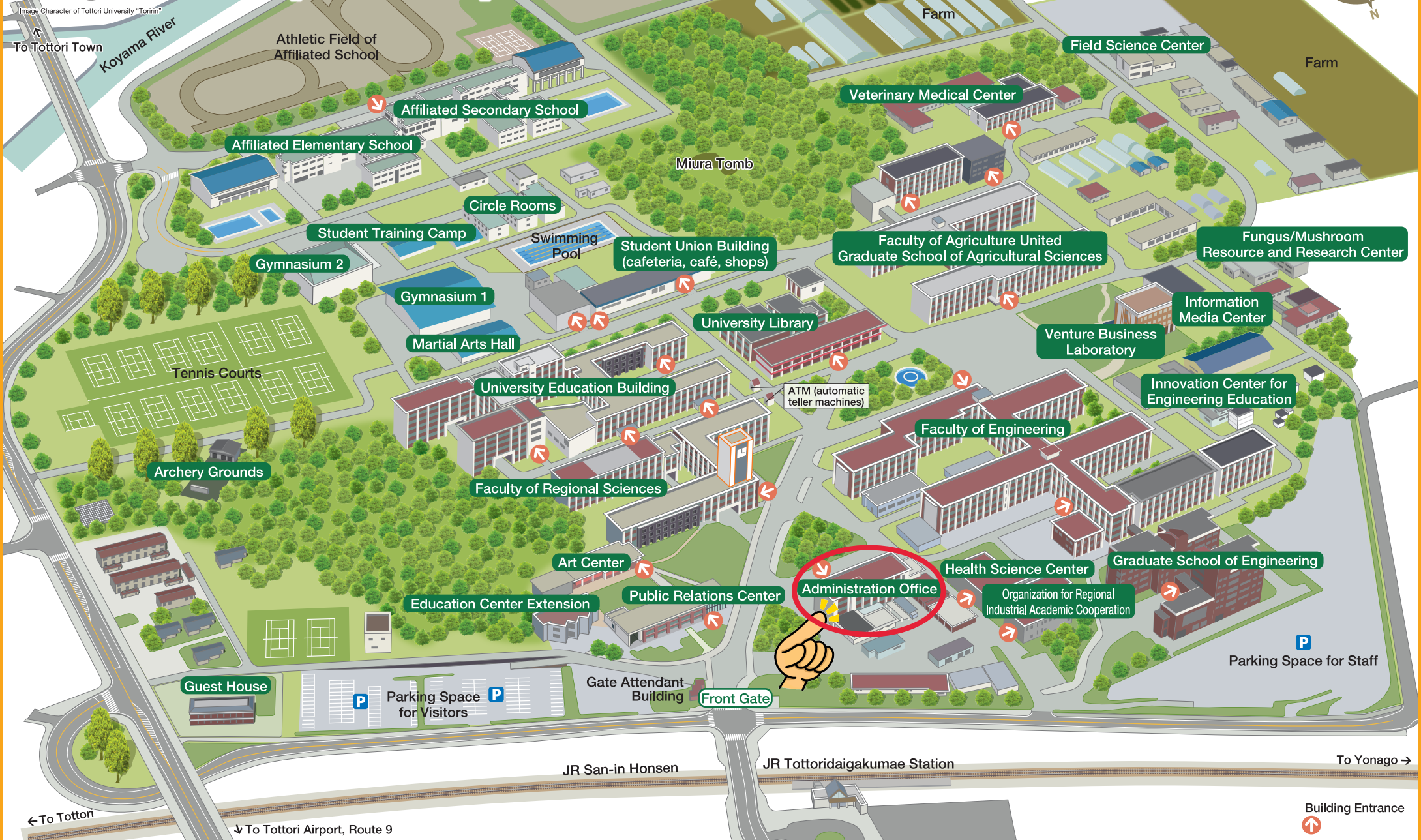
International Affairs Division, Tottori University



Tottori University <Tottori> Campus Map

Issued by: Public Relations Center (TEL +81-857-31-5750)

<http://www.tottori-u.ac.jp>



To Tottori Town

Koyama River

Athletic Field of Affiliated School

Rugby Field
Soccer Field

Athletics Stadium

Baseball Field

Turf Courts

Farm

Field Science Center

Farm

Affiliated Secondary School

Veterinary Medical Center

Affiliated Elementary School

Miura Tomb

Circle Rooms

Student Training Camp

Swimming Pool

Student Union Building
(cafeteria, café, shops)

Faculty of Agriculture United
Graduate School of Agricultural Sciences

Fungus/Mushroom
Resource and Research Center

Gymnasium 2

Gymnasium 1

University Library

Venture Business
Laboratory

Information
Media Center

Martial Arts Hall

University Education Building

ATM (automatic
teller machines)

Innovation Center for
Engineering Education

Tennis Courts

Faculty of Engineering

Archery Grounds

Faculty of Regional Sciences

Graduate School of Engineering

Art Center

Health Science Center

Education Center Extension

Public Relations Center

Administration Office

Organization for Regional
Industrial Academic Cooperation

Guest House

P Parking Space
for Visitors

Gate Attendant
Building

Front Gate

P Parking Space for Staff

JR San-in Honsen

JR Tottoridaigakumae Station

To Yonago →

← To Tottori

↓ To Tottori Airport, Route 9

Building Entrance

